

Product datasheet for **TP313842L**

SNX20 (NM_182854) Human Recombinant Protein

Product data:

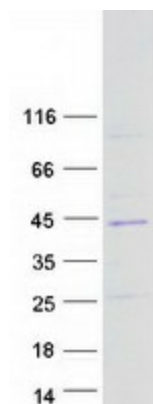
Product Type:	Recombinant Proteins
Description:	Recombinant protein of human sorting nexin 20 (SNX20), transcript variant 1, 1 mg
Species:	Human
Expression Host:	HEK293T
Expression cDNA Clone or AA Sequence:	>RC213842 representing NM_182854 Red =Cloning site Green =Tags(s) MASPEHPGSPGCMGPITQCTARTQQEAPATGPDLPHPGPDGHLDTHTSGLSSNSSMTTRELQQYWQNQKCR WKHVKLLFEIASARIEERKVSQFVYQIIVIQTGSFDNNKAVLERRYSDFAKLQKALLKTFREEIEDVEF PRKHLTGNAEEMICERRRALQEYLGLLYAIRCVRRSREFLDFLTRPELREAFGCLRAGQYPRALELLLR VLPLQEKLTAHCPAAAVPALCAVLLCHRDLDRPAEFAAGERALQRLQAREGHRYAPLLDAMVRLAYAL GKDFVTLQERLEESQLRRPTPRGITLKELTVREYLH TRTRPLEQKLISEEDLAANDILDYKDDDDKV
Tag:	C-Myc/DDK
Predicted MW:	36 kDa
Concentration:	>0.05 µg/µL as determined by microplate BCA method
Purity:	> 80% as determined by SDS-PAGE and Coomassie blue staining
Buffer:	25 mM Tris-HCl, 100 mM glycine, pH 7.3, 10% glycerol
Preparation:	Recombinant protein was captured through anti-DDK affinity column followed by conventional chromatography steps.
Note:	For testing in cell culture applications, please filter before use. Note that you may experience some loss of protein during the filtration process.
Storage:	Store at -80°C.
Stability:	Stable for 12 months from the date of receipt of the product under proper storage and handling conditions. Avoid repeated freeze-thaw cycles.
RefSeq:	NP_878274
Locus ID:	124460



[View online »](#)

UniProt ID:	Q7Z614
RefSeq Size:	1457
Cytogenetics:	16q12.1
RefSeq ORF:	948
Synonyms:	SLIC1
Summary:	SNX20 interacts with the cytoplasmic domain of PSGL1 (SELPLG; MIM 600738) and cycles PSGL1 into endosomes.[supplied by OMIM, Feb 2010]

Product images:



Coomassie blue staining of purified SNX20 protein (Cat# [TP313842]). The protein was produced from HEK293T cells transfected with SNX20 cDNA clone (Cat# [RC213842]) using MegaTran 2.0 (Cat# [TT210002]).