

## Product datasheet for **TP313832M**

### **KBTBD5 (KLHL40) (NM\_152393) Human Recombinant Protein**

#### **Product data:**

<b>Product Type:</b>	Recombinant Proteins
<b>Description:</b>	Recombinant protein of human kelch repeat and BTB (POZ) domain containing 5 (KBTBD5), 100 µg
<b>Species:</b>	Human
<b>Expression Host:</b>	HEK293T
<b>Expression cDNA Clone or AA Sequence:</b>	>RC213832 representing NM_152393 <b>Red</b> =Cloning site <b>Green</b> =Tags(s)

MALGLEQAEEQRLYQQTLLQDGLKDMLDHGKFLDCVWRAGEREFPCHRLVLAACSPYFRARFLAEPERAG  
ELHLEEVSPDVVAQVLHYLYTSEIALDEASVQDLFAAAHRFQIPSIFTICVSFLQKRLCLSNCLAVFRLG  
LLLD CARLAVAARDFICAHFTLVARDADFLGLSADELIAIISDGLNVEKEEAVFEAVMRWAGSGDAEAQ  
AERQRALPTVFESVRCRLLPRAFLESRVERHPLVRAQPELLRKVQMVKDAHEGRITTLRKKKKGKDGAGA  
KEADKGTSKAKAEDEEAERILPGILNDTLRFGMFLQDLIFMISEEGAVAYDPAANECYCASLSSQVPKN  
HVS LVTKENQVFVAGGLFY NEDNKEDPMSAYFLQFDHLDSEWLGMPPLSPRCLFGLGEALNSIYVVGGR  
EIKDGERCLDSVMCYDRLSFKWGESDPLPYVYGHVTLVSHMDLVYVIGGKGS DRKCLNKMCVYDPKFFEW  
KELAPMQTARSLFGATVHDGRIIVAAGVTD TGLTSSAEVYSITDNKWAPFEAFPQERSLSLVLVGLTLY  
AIGGFATLETESGELVPTELNDIWRYNEEEKKWEGVLEIAYAAGATFLPVRNLVCLTKM

**TRTRPLEQKLISEEDLAANDILDYKDDDDKV**

<b>Tag:</b>	C-Myc/DDK
<b>Predicted MW:</b>	69.1 kDa
<b>Concentration:</b>	>0.05 µg/µL as determined by microplate BCA method
<b>Purity:</b>	> 80% as determined by SDS-PAGE and Coomassie blue staining
<b>Buffer:</b>	25 mM Tris-HCl, 100 mM glycine, pH 7.3, 10% glycerol
<b>Preparation:</b>	Recombinant protein was captured through anti-DDK affinity column followed by conventional chromatography steps.
<b>Note:</b>	For testing in cell culture applications, please filter before use. Note that you may experience some loss of protein during the filtration process.
<b>Storage:</b>	Store at -80°C.



[View online »](#)

**Stability:** Stable for 12 months from the date of receipt of the product under proper storage and handling conditions. Avoid repeated freeze-thaw cycles.

**RefSeq:** [NP\\_689606](#)

**Locus ID:** 131377

**UniProt ID:** [Q2TBA0](#), [A8K5H9](#)

**RefSeq Size:** 2423

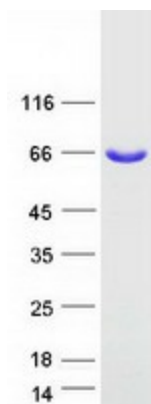
**Cytogenetics:** 3p22.1

**RefSeq ORF:** 1863

**Synonyms:** KBTBD5; NEM8; SRYP; SYRP

**Summary:** This gene encodes a protein containing a BACK domain, a BTB/POZ domain, and 5 Kelch repeats, however, its exact function is not known. The gene and the multi-domain protein structure are conserved across different taxa, including primates, rodents, chicken and zebrafish. [provided by RefSeq, Dec 2012]

### Product images:



Coomassie blue staining of purified KLHL40 protein (Cat# [TP313832]). The protein was produced from HEK293T cells transfected with KLHL40 cDNA clone (Cat# [RC213832]) using MegaTran 2.0 (Cat# [TT210002]).