

Product datasheet for **TP313832L**

KBTBD5 (KLHL40) (NM_152393) Human Recombinant Protein

Product data:

Product Type:	Recombinant Proteins
Description:	Recombinant protein of human kelch repeat and BTB (POZ) domain containing 5 (KBTBD5), 1 mg
Species:	Human
Expression Host:	HEK293T
Expression cDNA Clone or AA Sequence:	>RC213832 representing NM_152393 Red =Cloning site Green =Tags(s)

MALGLEQAEEQRLYQQTLLQDGLKDMLDHGKFLDCVWRAGEREFPCHRLVLAACSPYFRARFLAEPERAG
ELHLEEVS PDVVAQVLHYLYTSEIALDEASVQDLFAAAHRFQIPSIFTICVSFLQKRLCLSNCLAVFRLG
LLLD CARLAVAARDFICAHFTLVARDADFLGLSADELIAIISDGLNVEKEEAVFEAVMRWAGSGDAEAQ
AERQRALPTVFESVRCRLLPRAFLESRVERHPLVRAQPELLRKVQMVKDAHEGRITTLRKKKKGKDGAGA
KEADKGTSKAKAEDEEAERILPGILNDTLRFGMFLQDLIFMISEEGAVAYDPAANECYCASLSSQVPKN
HVS LVTKENQVFVAGGLFY NEDNKEDPMSAYFLQFDHLDSEWLGMPPLSPRCLFGLGEALNSIYVVGGR
EIKDGERCLDSVMCYDRLSFKWGESDPLPYVYGHVTLVSHMDLVYVIGGKGS DRKCLNKMCVYDPKKFEW
KELAPMQTARSLFGATVHDGRIIVAAGVTD TGLTSSAEVYSITDNKWAPFEAFPQERSLSLVLVGLTLY
AIGGFATLETESGELVPTELNDIWRYNEEEKKWEGVLREIAYAAGATFLPVRNLVCLTKM

TRTRPLEQKLISEEDLAANDILDYKDDDDKV

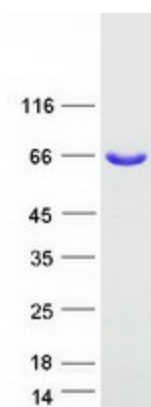
Tag:	C-Myc/DDK
Predicted MW:	69.1 kDa
Concentration:	>0.05 µg/µL as determined by microplate BCA method
Purity:	> 80% as determined by SDS-PAGE and Coomassie blue staining
Buffer:	25 mM Tris-HCl, 100 mM glycine, pH 7.3, 10% glycerol
Preparation:	Recombinant protein was captured through anti-DDK affinity column followed by conventional chromatography steps.
Note:	For testing in cell culture applications, please filter before use. Note that you may experience some loss of protein during the filtration process.
Storage:	Store at -80°C.



[View online »](#)

Stability:	Stable for 12 months from the date of receipt of the product under proper storage and handling conditions. Avoid repeated freeze-thaw cycles.
RefSeq:	NP_689606
Locus ID:	131377
UniProt ID:	Q2TBA0 , A8K5H9
RefSeq Size:	2423
Cytogenetics:	3p22.1
RefSeq ORF:	1863
Synonyms:	KBTBD5; NEM8; SRYP; SYRP
Summary:	This gene encodes a protein containing a BACK domain, a BTB/POZ domain, and 5 Kelch repeats, however, its exact function is not known. The gene and the multi-domain protein structure are conserved across different taxa, including primates, rodents, chicken and zebrafish. [provided by RefSeq, Dec 2012]

Product images:



Coomassie blue staining of purified KLHL40 protein (Cat# [TP313832]). The protein was produced from HEK293T cells transfected with KLHL40 cDNA clone (Cat# [RC213832]) using MegaTran 2.0 (Cat# [TT210002]).