

## Product datasheet for **TP313785M**

### DCL 1 (CD302) (NM\_014880) Human Recombinant Protein

#### Product data:

Product Type:	Recombinant Proteins
Description:	Recombinant protein of human CD302 molecule (CD302), 100 µg
Species:	Human
Expression Host:	HEK293T
Expression cDNA	>RC213785 representing NM_014880
Clone or AA Sequence:	Red=Cloning site Green=Tags(s)

MLRAALPALLLPLLGLAAAAVADCPSSSTWIQFQDSCYIFLQEAIKVESIEDVRNQCTDHGADMISIHNEE  
ENAFILDTLKKQWKGPDDILLGMFYDTDDASFKWFDNSNMTFDKWTQDDDEDLVDTCAFLHIKTGEWKK  
GNCEVSSVEGTLCKTAIPYKRKYLSDNHILISALVIASVTILTVLGAIWFLYKKHSDSRFTTVFSTAPQ  
SPYNEDCVLVGEEENEYPVQFD

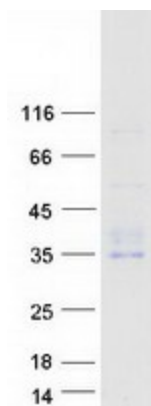
TRTRPLEQKLISEEDLAANDILDYKDDDDKV

Tag:	C-Myc/DDK
Predicted MW:	26 kDa
Concentration:	>0.05 µg/µL as determined by microplate BCA method
Purity:	> 80% as determined by SDS-PAGE and Coomassie blue staining
Buffer:	25 mM Tris-HCl, 100 mM glycine, pH 7.3, 10% glycerol
Preparation:	Recombinant protein was captured through anti-DDK affinity column followed by conventional chromatography steps.
Note:	For testing in cell culture applications, please filter before use. Note that you may experience some loss of protein during the filtration process.
Storage:	Store at -80°C.
Stability:	Stable for 12 months from the date of receipt of the product under proper storage and handling conditions. Avoid repeated freeze-thaw cycles.
RefSeq:	<a href="#">NP_055695</a>
Locus ID:	9936
UniProt ID:	<a href="#">Q8IX05</a>



[View online »](#)

RefSeq Size:	3740
Cytogenetics:	2q24.2
RefSeq ORF:	696
Synonyms:	BIMLEC; CLEC13A; DCL-1; DCL1
Summary:	CD302 is a C-type lectin receptor involved in cell adhesion and migration, as well as endocytosis and phagocytosis (Kato et al., 2007 [PubMed 17947679]).[supplied by OMIM, Aug 2008]
Protein Families:	Druggable Genome, Transmembrane

**Product images:**

Coomassie blue staining of purified CD302 protein (Cat# [TP313785]). The protein was produced from HEK293T cells transfected with CD302 cDNA clone (Cat# [RC213785]) using MegaTran 2.0 (Cat# [TT210002]).