

Product datasheet for TP313777

SORBS2 (NM_003603) Human Recombinant Protein

Product data:

Product Type:	Recombinant Proteins
Description:	Purified recombinant protein of Homo sapiens sorbin and SH3 domain containing 2 (SORBS2), transcript variant 1
Species:	Human
Expression Host:	HEK293T
Expression cDNA	>RC213777 representing NM_003603
Clone or AA Sequence:	Red=Cloning site Green=Tags(s)

MNTGRDSQSPDSAKGFRSVRPNLQDKRSPTQSQITVNGNSGGAVSPMSYYQRPFSPSAYSLPASLNSSIV
MQHGTSLDSTDYTPQHAQSLDGGTSSSIPLYSSEEEKRVTVIKAPHYPGIGPVDESIGIPTAIRTTVDRP
KDWYKTMFKQIHMVHKPDDDDTDMYNTPTYTNAGLYNPPYSAQSHPAAKTQTYRPLSKSHSDNSPNAFKDA
SSPVPPPHVPPVPPLRPRDRSSTEKHDWPPDRKVDTRKFRSEPRSFYEPGKSSILQHERPTDRINP
DDIDLENEPWYKFFSELEFGRPPPKPLDYVQDHSSGVFNEASLYQSSIDRSLERPMSASMASDFRKRR
KSEPAVGPPRGLGDQSASRTSPGRVDLPGSSTLTLSFTSSSPSSPRAKDRESRYSSTLTDMGRSAP
RERRGTPEKEKLPKAVYDFKAQTSKELSFKKGDTVYILRKIDQNWYEGEHHRVGFIFPISYVEKLTPE
KAQPARPPPAQPGEIGEAIAKYNFNADTNVELSLRKGDRVILLKRVQDNWYEGKIPGTNRQGIFPVSYV
EVKKNKGAEDYDPPIPHSYSSDRIHSLSSNKPQRPVFTHENIQGGGEPFQALYNYTPRNEDELELRE
SDVIDVMEKCDDGWFVGTSRRTKFFGTFPGNYVKRL

TRTRPLEQKLISEEDLAANDILDYKDDDDKV

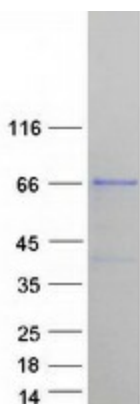
Tag:	C-Myc/DDK
Predicted MW:	69.8 kDa
Concentration:	>0.05 µg/µL as determined by microplate BCA method
Purity:	> 80% as determined by SDS-PAGE and Coomassie blue staining
Buffer:	25 mM Tris-HCl, 100 mM glycine, pH 7.3, 10% glycerol
Preparation:	Recombinant protein was captured through anti-DDK affinity column followed by conventional chromatography steps.
Note:	For testing in cell culture applications, please filter before use. Note that you may experience some loss of protein during the filtration process.
Storage:	Store at -80°C.



[View online »](#)

Stability:	Stable for 12 months from the date of receipt of the product under proper storage and handling conditions. Avoid repeated freeze-thaw cycles.
RefSeq:	NP_003594
Locus ID:	8470
UniProt ID:	O94875 , B7Z3D7
RefSeq Size:	3360
Cytogenetics:	4q35.1
RefSeq ORF:	1998
Synonyms:	ARGBP2; PRO0618
Summary:	Arg and c-Abl represent the mammalian members of the Abelson family of non-receptor protein-tyrosine kinases. They interact with the Arg/Abl binding proteins via the SH3 domains present in the carboxy end of the latter group of proteins. This gene encodes the sorbin and SH3 domain containing 2 protein. It has three C-terminal SH3 domains and an N-terminal sorbin homology (SoHo) domain that interacts with lipid raft proteins. The subcellular localization of this protein in epithelial and cardiac muscle cells suggests that it functions as an adapter protein to assemble signaling complexes in stress fibers, and that it is a potential link between Abl family kinases and the actin cytoskeleton. Alternative splicing results in multiple transcript variants encoding different isoforms. [provided by RefSeq, Jul 2008]

Product images:



Coomassie blue staining of purified SORBS2 protein (Cat# TP313777). The protein was produced from HEK293T cells transfected with SORBS2 cDNA clone (Cat# [RC213777]) using MegaTran 2.0 (Cat# [TT210002]).