

Product datasheet for TP313771M

ARX (NM_139058) Human Recombinant Protein

Product data:

Product Type: Recombinant Proteins
Description: Recombinant protein of human aristaless related homeobox (ARX), 100 µg
Species: Human
Expression Host: HEK293T
Expression cDNA Clone or AA Sequence: >RC213771 representing NM_139058
Red=Cloning site Green=Tags(s)

MSNQYQEEGCSERPECKSKSPTLLSSYCIDSLGRRSPCKMRLLGAAQSLPAPLTSRADPEKAVQGSPKS
 SSAPFEAELHLPKLRRLYGPGGGRLQGAAAAAAAAAAAAAAAAAATATAGPRGEAPPPPTARPERPD
 GAGAAAAAAAAAAWDTLKISQAPQVSISRKSYRENGAPFVPPPPALDELGGPGGVTHPEERLGVAGG
 PGSAPAAGGGTGTEDDEEELLEDEEELLEDEEELLEDDARALLKEPRRCVPAATGAVAAAAAA
 AVATEGGELSPKEELLHPEDAEGKDGEDSVCLSAGSDSEEGLLKRKQRRYRTTFTSYQLEELERAFQKT
 HYPDVFTREELAMRLDLTEARVQVWFQNRRAKWRKREKAGAQTHTPPGLPFGPLSATHPLSPYLDASFPF
 PHHPALDSAWTAAAAAAAAAFPSLPPPPGSASLPPSGAPLGLSTFLGAAVFRHPAFISPAFGRLFSTMAP
 LTSASTAAALLRQPTPAVEGAVASGALADPATAAADRRASSIAALRLKAKEHAAQLTQLNILPGTSTGKE
 VC

TRTRPLEQKLISEEDLAANDILDYKDDDDKV

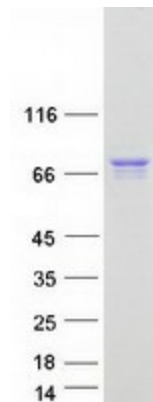
Tag: C-Myc/DDK
Predicted MW: 58 kDa
Concentration: >0.05 µg/µL as determined by microplate BCA method
Purity: > 80% as determined by SDS-PAGE and Coomassie blue staining
Buffer: 25 mM Tris-HCl, 100 mM glycine, pH 7.3, 10% glycerol
Preparation: Recombinant protein was captured through anti-DDK affinity column followed by conventional chromatography steps.
Note: For testing in cell culture applications, please filter before use. Note that you may experience some loss of protein during the filtration process.
Storage: Store at -80°C.



[View online »](#)

Stability:	Stable for 12 months from the date of receipt of the product under proper storage and handling conditions. Avoid repeated freeze-thaw cycles.
RefSeq:	NP_620689
Locus ID:	170302
UniProt ID:	Q96QS3
RefSeq Size:	2183
Cytogenetics:	Xp21.3
RefSeq ORF:	1686
Synonyms:	CT121; EIEE1; ISSX; MRX29; MRX32; MRX33; MRX36; MRX38; MRX43; MRX54; MRX76; MRX87; MRXS1; PRTS
Summary:	This gene is a homeobox-containing gene expressed during development. The expressed protein contains two conserved domains, a C-peptide (or aristaless domain) and the prd-like class homeobox domain. It is a member of the group-II aristaless-related protein family whose members are expressed primarily in the central and/or peripheral nervous system. This gene is thought to be involved in CNS development. Expansion of a polyalanine tract and other mutations in this gene cause X-linked cognitive disability and epilepsy. [provided by RefSeq, Jul 2016]
Protein Families:	Transcription Factors

Product images:



Coomassie blue staining of purified ARX protein (Cat# [TP313771]). The protein was produced from HEK293T cells transfected with ARX cDNA clone (Cat# [RC213771]) using MegaTran 2.0 (Cat# [TT210002]).