

## Product datasheet for **TP313771L**

### ARX (NM\_139058) Human Recombinant Protein

#### Product data:

**Product Type:** Recombinant Proteins  
**Description:** Recombinant protein of human aristaless related homeobox (ARX), 1 mg  
**Species:** Human  
**Expression Host:** HEK293T  
**Expression cDNA Clone or AA Sequence:** >RC213771 representing NM\_139058  
**Red**=Cloning site **Green**=Tags(s)

MSNQYQEEGCSERPECKSKSPTLLSSYCIDSLGRRSPCKMRLLGAAQSLPAPLTSRADPEKAVQGSPKS  
SSAPFEAELHLPKLRRLYGPGGGRLQGAAAAAAAAAAAAAAAAAATATAGPRGEAPPPPTARPERPD  
GAGAAAAAAAAAAAAWDTLKISQAPQVSISRKSYRENGAPFVPPPPALDELGGPGGVTHPEERLGVAGG  
PGSAPAAGGGTGTEDDEEELLEDEEELLEDEEELLEDDARALLKEPRRCVAATGAVAAAAAA  
AVATEGGELSPKEELLHPEDAEGKDGEDSVCLSGSDSEEGLLKRKQRRYRTTFTSYQLEELERAFQKT  
HYPDVFTREELAMRLDLTEARVQVWFQNRRAKWRKREKAGAQTHTPPGLPFGPLSATHPLSPYLDASFPF  
PHHPALDSAWTAAAAAAAAAFPSLPPPPGSASLPPSGAPLGLSTFLGAAVFRHPAFISPAFGRLFSTMAP  
LTSASTAAALLRQPTPAVEGAVASGALADPATAAADRRASSIAALRLKAKEHAAQLTQLNILPGTSTGKE  
VC

**TRTRPLEQKLISEEDLAANDILDYKDDDDKV**

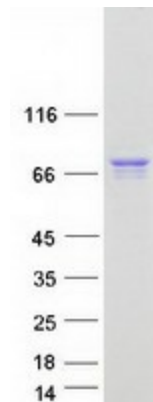
**Tag:** C-Myc/DDK  
**Predicted MW:** 58 kDa  
**Concentration:** >0.05 µg/µL as determined by microplate BCA method  
**Purity:** > 80% as determined by SDS-PAGE and Coomassie blue staining  
**Buffer:** 25 mM Tris-HCl, 100 mM glycine, pH 7.3, 10% glycerol  
**Preparation:** Recombinant protein was captured through anti-DDK affinity column followed by conventional chromatography steps.  
**Note:** For testing in cell culture applications, please filter before use. Note that you may experience some loss of protein during the filtration process.  
**Storage:** Store at -80°C.



[View online »](#)

<b>Stability:</b>	Stable for 12 months from the date of receipt of the product under proper storage and handling conditions. Avoid repeated freeze-thaw cycles.
<b>RefSeq:</b>	<a href="#">NP_620689</a>
<b>Locus ID:</b>	170302
<b>UniProt ID:</b>	<a href="#">Q96QS3</a>
<b>RefSeq Size:</b>	2183
<b>Cytogenetics:</b>	Xp21.3
<b>RefSeq ORF:</b>	1686
<b>Synonyms:</b>	CT121; EIEE1; ISSX; MRX29; MRX32; MRX33; MRX36; MRX38; MRX43; MRX54; MRX76; MRX87; MRXS1; PRTS
<b>Summary:</b>	This gene is a homeobox-containing gene expressed during development. The expressed protein contains two conserved domains, a C-peptide (or aristaless domain) and the prd-like class homeobox domain. It is a member of the group-II aristaless-related protein family whose members are expressed primarily in the central and/or peripheral nervous system. This gene is thought to be involved in CNS development. Expansion of a polyalanine tract and other mutations in this gene cause X-linked cognitive disability and epilepsy. [provided by RefSeq, Jul 2016]
<b>Protein Families:</b>	Transcription Factors

### Product images:



Coomassie blue staining of purified ARX protein (Cat# [TP313771]). The protein was produced from HEK293T cells transfected with ARX cDNA clone (Cat# [RC213771]) using MegaTran 2.0 (Cat# [TT210002]).