

Product datasheet for **TP313768M**

HOXC6 (NM_004503) Human Recombinant Protein

Product data:

Product Type:	Recombinant Proteins
Description:	Recombinant protein of human homeobox C6 (HOXC6), transcript variant 1, 100 µg
Species:	Human
Expression Host:	HEK293T
Expression cDNA Clone or AA Sequence:	>RC213768 representing NM_004503 Red =Cloning site Green =Tags(s) MNSYFTNP SLSCHLAGGQDVL PNVALN STAYDPVRHFSTYGA AVAQNR IYSTPFYSPQEN VV FSSSRGPY DYGSNSFYQE KDMLSNCRQNTLGHNTQTSIAQDF SSEQGRTAPQDQKASI QIYPWMQRMNSHSGVGYGAD RRRGRQIYSRYQTLELEKEFHFNRYLTRRRRIEIANALCLTERQIKIWFQNR RMKWKKESNLSTLSGGG GGATADSLGGKEEKREETEEKQKE TRTRPLEQKLISEEDLAANDILDYKDDDDKV
Tag:	C-Myc/DDK
Predicted MW:	26.7 kDa
Concentration:	>0.05 µg/µL as determined by microplate BCA method
Purity:	> 80% as determined by SDS-PAGE and Coomassie blue staining
Buffer:	25 mM Tris-HCl, 100 mM glycine, pH 7.3, 10% glycerol
Preparation:	Recombinant protein was captured through anti-DDK affinity column followed by conventional chromatography steps.
Note:	For testing in cell culture applications, please filter before use. Note that you may experience some loss of protein during the filtration process.
Storage:	Store at -80°C.
Stability:	Stable for 12 months from the date of receipt of the product under proper storage and handling conditions. Avoid repeated freeze-thaw cycles.
RefSeq:	<u>NP_004494</u>
Locus ID:	3223
UniProt ID:	<u>P09630</u>



[View online »](#)

RefSeq Size: 1681

Cytogenetics: 12q13.13

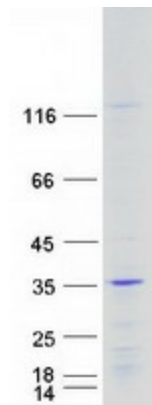
RefSeq ORF: 705

Synonyms: CP25; HHO.C8; HOX3; HOX3C

Summary: This gene belongs to the homeobox family, members of which encode a highly conserved family of transcription factors that play an important role in morphogenesis in all multicellular organisms. Mammals possess four similar homeobox gene clusters, HOXA, HOXB, HOXC and HOXD, which are located on different chromosomes and consist of 9 to 11 genes arranged in tandem. This gene, HOXC6, is one of several HOXC genes located in a cluster on chromosome 12. Three genes, HOXC5, HOXC4 and HOXC6, share a 5' non-coding exon. Transcripts may include the shared exon spliced to the gene-specific exons, or they may include only the gene-specific exons. Alternatively spliced transcript variants encoding different isoforms have been identified for HOXC6. Transcript variant two includes the shared exon, and transcript variant one includes only gene-specific exons. [provided by RefSeq, Jul 2008]

Protein Families: Transcription Factors

Product images:



Coomassie blue staining of purified HOXC6 protein (Cat# [TP313768]). The protein was produced from HEK293T cells transfected with HOXC6 cDNA clone (Cat# [RC213768]) using MegaTran 2.0 (Cat# [TT210002]).