

Product datasheet for **TP313728**

Ephrin A2 (EFNA2) (NM_001405) Human Recombinant Protein

Product data:

Product Type: Recombinant Proteins

Description: Recombinant protein of human ephrin-A2 (EFNA2), 20 µg

Species: Human

Expression Host: HEK293T

Expression cDNA Clone or AA Sequence: >RC213728 representing NM_001405

Red=Cloning site **Green**=Tags(s)

MAPAQRPLPLLLLLLPLPPPPFARAEDAARANS DRYAVYWNRSNPRFHAGAGDDGGGYTVEVSINDYLD
IYCPHYGAPLPPAERMEHYVLYMVNGEGHASC DHRQGRGFKRWE CNRPAAPGGPLKFSEKFQLFTPFSLGF
EFRPGHEYYYISATPPNAVDRPCLRLKVYVRPTNETLYEAPEPIFTSNNSCSPGGCRLFLSTIPVLWTL
LGS

TRTRPLEQKLISEEDLAANDILDYKDDDDKV

Tag: C-Myc/DDK

Predicted MW: 21.3 kDa

Concentration: >0.05 µg/µL as determined by microplate BCA method

Purity: > 80% as determined by SDS-PAGE and Coomassie blue staining

Buffer: 25 mM Tris-HCl, 100 mM glycine, pH 7.3, 10% glycerol

Preparation: Recombinant protein was captured through anti-DDK affinity column followed by conventional chromatography steps.

Note: For testing in cell culture applications, please filter before use. Note that you may experience some loss of protein during the filtration process.

Storage: Store at -80°C.

Stability: Stable for 12 months from the date of receipt of the product under proper storage and handling conditions. Avoid repeated freeze-thaw cycles.

RefSeq: [NP_001396](#)

Locus ID: 1943

UniProt ID: [O43921](#)



[View online »](#)

RefSeq Size: 642

Cytogenetics: 19p13.3

RefSeq ORF: 639

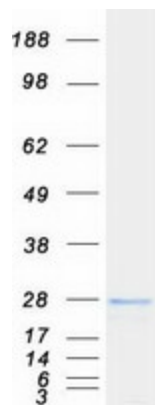
Synonyms: ELF-1; EPLG6; HEK7-L; LERK-6; LERK6

Summary: This gene encodes a member of the ephrin family. The protein is composed of a signal sequence, a receptor-binding region, a spacer region, and a hydrophobic region. The EPH and EPH-related receptors comprise the largest subfamily of receptor protein-tyrosine kinases and have been implicated in mediating developmental events, particularly in the nervous system. Based on their structures and sequence relationships, ephrins are divided into the ephrin-A (EFNA) class, which are anchored to the membrane by a glycosylphosphatidylinositol linkage, and the ephrin-B (EFNB) class, which are transmembrane proteins. Posttranslational modifications determine whether this protein localizes to the nucleus or the cytoplasm. [provided by RefSeq, Jul 2008]

Protein Families: Druggable Genome

Protein Pathways: Axon guidance

Product images:



Coomassie blue staining of purified EFNA2 protein (Cat# TP313728). The protein was produced from HEK293T cells transfected with EFNA2 cDNA clone (Cat# [RC213728]) using MegaTran 2.0 (Cat# [TT210002]).