

Product datasheet for TP313712M

BCS1L (NM_001079866) Human Recombinant Protein

Product data:

Product Type:	Recombinant Proteins
Description:	Recombinant protein of human BCS1-like (yeast) (BCS1L), nuclear gene encoding mitochondrial protein, transcript variant 2, 100 µg
Species:	Human
Expression Host:	HEK293T
Expression cDNA Clone or AA Sequence:	>RC213712 protein sequence Red =Cloning site Green =Tags(s)
	MPLSDFILALKDNPYFGAGFGLVGVGTALALARKGVQLGLVAFRRRHVMITLVEVPARDRSYAWLLSWLTRH STRTQHLSVETSYLQHESGRISTKFEFVPSPGNHFIWYRGKWIRVERSREMQMIDLQTGTPWESVTFTAL GTDKRVFFNILEEARELALQEEGKTVMYTAVGSEWRPFYPRRRRPLNSVVLQQGLADRIVRDVQEFID NPKWYTDGRGIPYRRGYLLYGPPGCGKSSFITALAGELEHSICLLSLTDSLSDDRLNHLLSVAPQQSLVL LEDVDA AFLSRDLAVENPVKYQGLGRLTFSGLLNALDGVASTEARIVFMTTNHVDRLDPALIRPGRVDLK EYVGYCSHWQLTQMFQRFYPGQAPSLAENFAEHVLRATNQISPAQVQGYFMLYKNDPVGAIHNAESLRR TRTRPLEQKLISEEDLAANDILDYKDDDDKV
Tag:	C-Myc/DDK
Predicted MW:	47.4 kDa
Concentration:	>0.05 µg/µL as determined by microplate BCA method
Purity:	> 80% as determined by SDS-PAGE and Coomassie blue staining
Buffer:	25 mM Tris-HCl, 100 mM glycine, pH 7.3, 10% glycerol
Preparation:	Recombinant protein was captured through anti-DDK affinity column followed by conventional chromatography steps.
Note:	For testing in cell culture applications, please filter before use. Note that you may experience some loss of protein during the filtration process.
Storage:	Store at -80°C.
Stability:	Stable for 12 months from the date of receipt of the product under proper storage and handling conditions. Avoid repeated freeze-thaw cycles.
RefSeq:	<u>NP_001073335</u>



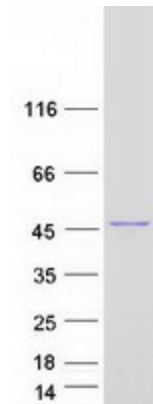
[View online »](#)

Locus ID:	617
UniProt ID:	Q9Y276
RefSeq Size:	1454
Cytogenetics:	2q35
RefSeq ORF:	1257
Synonyms:	BCS; BCS1; BJS; FLNMS; GRACILE; h-BCS; h-BCS1; Hs.6719; MC3DN1; PTD

Summary: This gene encodes a homolog of the *S. cerevisiae* bcs1 protein which is involved in the assembly of complex III of the mitochondrial respiratory chain. The encoded protein does not contain a mitochondrial targeting sequence but experimental studies confirm that it is imported into mitochondria. Mutations in this gene are associated with mitochondrial complex III deficiency and the GRACILE syndrome. Several alternatively spliced transcripts encoding two different isoforms have been described. [provided by RefSeq, Jan 2016]

Protein Families: Druggable Genome

Product images:



Coomassie blue staining of purified BCS1L protein (Cat# [TP313712]). The protein was produced from HEK293T cells transfected with BCS1L cDNA clone (Cat# [RC213712]) using MegaTran 2.0 (Cat# [TT210002]).