

Product datasheet for TP313712L

BCS1L (NM_001079866) Human Recombinant Protein

Product data:

Product Type: Recombinant Proteins

Description: Recombinant protein of human BCS1-like (yeast) (BCS1L), nuclear gene encoding mitochondrial protein, transcript variant 2, 1 mg

Species: Human

Expression Host: HEK293T

Expression cDNA Clone or AA Sequence: >RC213712 protein sequence
Red=Cloning site Green=Tags(s)

MPLSDFILALKDNPFYFAGFGLVGVGTALALARKGVQLGLVAFRRRHVMITLVEVPARDRSYAWLLSWLTRH
STRTQHLSVETSYLQHESGRISTKFEFVPSPGNHFIWYRGKWIRVERSREMQMIDLQTGTPWESVTFTAL
GTDKRVFFNILEEARELALQEEGKTVMYTAVGSEWRPFYPRRRRPLNSVVLQQGLADRIVRDVQEFID
NPKWYTDGRGIPYRRGYLLYGPPGCGKSSFITALAGELEHSICLLSLTSSLSDDRLNHLLSVAPQQSLVL
LEDVDAAFLSRDLAVENPVKYQGLGRLTFSGLLNALDGVASTEARIVFMTTNHVDRLDPALIRPGRVDLK
EYVGYCSHWQLTQMFQRFYPGQAPSLAENFAEHVLRATNQISPAQVQGYFMYLKNPVGAIHNAESLRR

TRTRPLEQKLISEEDLAANDILDYKDDDDKV

Tag: C-Myc/DDK

Predicted MW: 47.4 kDa

Concentration: >0.05 µg/µL as determined by microplate BCA method

Purity: > 80% as determined by SDS-PAGE and Coomassie blue staining

Buffer: 25 mM Tris-HCl, 100 mM glycine, pH 7.3, 10% glycerol

Preparation: Recombinant protein was captured through anti-DDK affinity column followed by conventional chromatography steps.

Note: For testing in cell culture applications, please filter before use. Note that you may experience some loss of protein during the filtration process.

Storage: Store at -80°C.

Stability: Stable for 12 months from the date of receipt of the product under proper storage and handling conditions. Avoid repeated freeze-thaw cycles.

RefSeq: [NP_001073335](#)



[View online »](#)

Locus ID: 617

UniProt ID: [Q9Y276](#), [A0A024R445](#)

RefSeq Size: 1454

Cytogenetics: 2q35

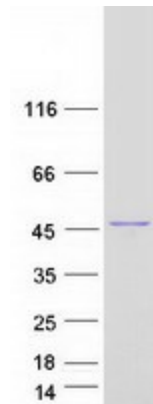
RefSeq ORF: 1257

Synonyms: BCS; BCS1; BJS; FLNMS; GRACILE; h-BCS; h-BCS1; Hs.6719; MC3DN1; PTD

Summary: This gene encodes a homolog of the *S. cerevisiae* bcs1 protein which is involved in the assembly of complex III of the mitochondrial respiratory chain. The encoded protein does not contain a mitochondrial targeting sequence but experimental studies confirm that it is imported into mitochondria. Mutations in this gene are associated with mitochondrial complex III deficiency and the GRACILE syndrome. Several alternatively spliced transcripts encoding two different isoforms have been described. [provided by RefSeq, Jan 2016]

Protein Families: Druggable Genome

Product images:



Coomassie blue staining of purified BCS1L protein (Cat# [TP313712]). The protein was produced from HEK293T cells transfected with BCS1L cDNA clone (Cat# [RC213712]) using MegaTran 2.0 (Cat# [TT210002]).