

## Product datasheet for TP313712

### BCS1L (NM\_001079866) Human Recombinant Protein

#### Product data:

**Product Type:** Recombinant Proteins

**Description:** Recombinant protein of human BCS1-like (yeast) (BCS1L), nuclear gene encoding mitochondrial protein, transcript variant 2, 20 µg

**Species:** Human

**Expression Host:** HEK293T

**Expression cDNA Clone or AA Sequence:** >RC213712 protein sequence  
**Red**=Cloning site **Green**=Tags(s)

MPLSDFILALKDNPYFGAGFGLVGVGTALALARKGVQLGLVAFRRRHMITLEVPARDRSYAWLLSWLTRH  
STRTQHLSVETSYLQHESGRISTKFEFVPSPGNHFIWYRGKWIRVERSREMQMIDLQTGTPWESVTFTAL  
GTDKRVFFNILEEARELALQEEGKTVMYTAVGSEWRPFYPRRRRPLNSVVLQQGLADRIVRDVQEFID  
NPKWYTDGRGIPYRRGYLLYGPPGCGKSSFITALAGELEHSICLLSLTDSLSDDRLNHLLSVAPQQSLVL  
LEDVDA AFLSRDLAVENPVKYQGLGRLTFSGLLNALDGVASTEARIVFMTTNHVDRLDPALIRPGRVDLK  
EYVGYCSHWQLTQMFQRFYPGQAPSLAENFAEHVLRATNQISPAQVQGYFMLYKNDPVGAIHNAESLRR

**TRTRPLEQKLISEEDLAANDILDYKDDDDKV**

**Tag:** C-Myc/DDK

**Predicted MW:** 47.4 kDa

**Concentration:** >0.05 µg/µL as determined by microplate BCA method

**Purity:** > 80% as determined by SDS-PAGE and Coomassie blue staining

**Buffer:** 25 mM Tris-HCl, 100 mM glycine, pH 7.3, 10% glycerol

**Preparation:** Recombinant protein was captured through anti-DDK affinity column followed by conventional chromatography steps.

**Note:** For testing in cell culture applications, please filter before use. Note that you may experience some loss of protein during the filtration process.

**Storage:** Store at -80°C.

**Stability:** Stable for 12 months from the date of receipt of the product under proper storage and handling conditions. Avoid repeated freeze-thaw cycles.

**RefSeq:** [NP\\_001073335](#)



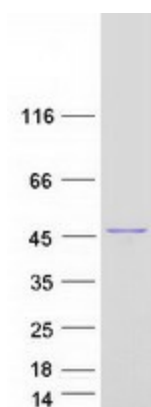
[View online »](#)

Locus ID:	617
UniProt ID:	<a href="#">Q9Y276</a>
RefSeq Size:	1454
Cytogenetics:	2q35
RefSeq ORF:	1257
Synonyms:	BCS; BCS1; BJS; FLNMS; GRACILE; h-BCS; h-BCS1; Hs.6719; MC3DN1; PTD

**Summary:** This gene encodes a homolog of the *S. cerevisiae* bcs1 protein which is involved in the assembly of complex III of the mitochondrial respiratory chain. The encoded protein does not contain a mitochondrial targeting sequence but experimental studies confirm that it is imported into mitochondria. Mutations in this gene are associated with mitochondrial complex III deficiency and the GRACILE syndrome. Several alternatively spliced transcripts encoding two different isoforms have been described. [provided by RefSeq, Jan 2016]

**Protein Families:** Druggable Genome

### Product images:



Coomassie blue staining of purified BCS1L protein (Cat# TP313712). The protein was produced from HEK293T cells transfected with BCS1L cDNA clone (Cat# [RC213712]) using MegaTran 2.0 (Cat# [TT210002]).