

## Product datasheet for **TP313689L**

### Eph receptor A1 (EPHA1) (NM\_005232) Human Recombinant Protein

#### Product data:

Product Type:	Recombinant Proteins
Description:	Recombinant protein of human EPH receptor A1 (EPHA1), 1 mg
Species:	Human
Expression Host:	HEK293T
Expression cDNA Clone or AA Sequence:	>RC213689 representing NM_005232 Red=Cloning site Green=Tags(s)

MERRWPLGLGLVLLLCAPLPPGAHAKEVTLMDTSKAQGELGWLLDPPKDGWSEQQILNGTPLYMYQDCP  
MQGRRDTHWLRSNWYRGEASRVHVELQFTVRDCKSFPGGAGPLGCKETFNLLYMESDQDVGILRRP  
LFQKVTTVAADQSFTIRD LASGSVKLNVERCSLGRLTRRGLYLAFHNPGACVALSVRVFYQRCPETLNG  
LAQFPDTPGPAGLVEVAGTCLPHARASPRPSGAPRMHCSPDGEWLVPVGRCHCEPGYEEGGSGEACVAC  
PSGSYRMDMDTPHCLTCPQQSTAASEGATICTCESGHYRAPGEGPQVACTGPPSAPRNLSFSASGTQLSL  
RWEPPADTGGRQDVRYSVRCSQCQGT AQDGGPCQPCGVGVHVFSPGARGLTTPAVHVNGLEPYANYTFNVE  
AQNGVSGLGSSGHASTSVSISMGHAESLSGLSLRLVKKEPRQLELTWAGSRPRSPGANLTYELHVLNQDE  
ERYQMVLEPRVLLTELQPD TTYIVRVRMLTPLGPGPFSPDHEFRTSPPVSRGLTGGEIVAVIFGLLLGAA  
LLLILVFRSRRARQRQRQRDRATDVDREDKLWLKPYVDLQAYEDPAQGALDFTRELDPAWLMVDTVI  
GEGEFGEVYRGT LRLPSQDCKTVAIKTLKDTSPGGQWWNFLREATIMGQFSPHILHLEGVTKRKPIMI  
ITEFMENGALDAFLREREDQLVPGQLVAMLQGIASGMNYLSNHNYVHRDLAARNILVNQNLCKKVSDFGL  
TRLLDDFDGT YETQGGKIPIRWTAPEAIAHRIFTASDVWSFGIVMWEVLSFGDKPYGEMSNQEVMSKIE  
DG YRLPPPVD CPAPLYELMKNCWAYDRARRPHFQKLQAHLEQLLANPHSLRTIANFDPRVTLRRLPSLSGS  
DGIPYRTVSEWLESIRMKRYILHFHSAGLDTMECVLELTAEDLTQMGITLPGHQKRILCSIQGFKD

TRTRPLEQKLISEEDLAANDILDYKDDDDKV

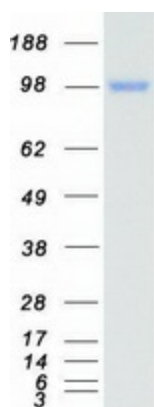
Tag:	C-Myc/DDK
Predicted MW:	107.9 kDa
Concentration:	>0.05 µg/µL as determined by microplate BCA method
Purity:	> 80% as determined by SDS-PAGE and Coomassie blue staining
Buffer:	25 mM Tris-HCl, 100 mM glycine, pH 7.3, 10% glycerol
Preparation:	Recombinant protein was captured through anti-DDK affinity column followed by conventional chromatography steps.



[View online »](#)

<b>Note:</b>	For testing in cell culture applications, please filter before use. Note that you may experience some loss of protein during the filtration process.
<b>Storage:</b>	Store at -80°C.
<b>Stability:</b>	Stable for 12 months from the date of receipt of the product under proper storage and handling conditions. Avoid repeated freeze-thaw cycles.
<b>RefSeq:</b>	<a href="#">NP_005223</a>
<b>Locus ID:</b>	2041
<b>UniProt ID:</b>	<a href="#">P21709</a>
<b>RefSeq Size:</b>	3367
<b>Cytogenetics:</b>	7q34-q35
<b>RefSeq ORF:</b>	2928
<b>Synonyms:</b>	EPH; EPHT; EPHT1
<b>Summary:</b>	This gene belongs to the ephrin receptor subfamily of the protein-tyrosine kinase family. EPH and EPH-related receptors have been implicated in mediating developmental events, particularly in the nervous system. Receptors in the EPH subfamily typically have a single kinase domain and an extracellular region containing a Cys-rich domain and 2 fibronectin type III repeats. The ephrin receptors are divided into 2 groups based on the similarity of their extracellular domain sequences and their affinities for binding ephrin-A and ephrin-B ligands. This gene is expressed in some human cancer cell lines and has been implicated in carcinogenesis. [provided by RefSeq, Jul 2008]
<b>Protein Families:</b>	Druggable Genome, Protein Kinase, Transmembrane
<b>Protein Pathways:</b>	Axon guidance

### Product images:



Coomassie blue staining of purified EPHA1 protein (Cat# [TP313689]). The protein was produced from HEK293T cells transfected with EPHA1 cDNA clone (Cat# [RC213689]) using MegaTran 2.0 (Cat# [TT210002]).