

Product datasheet for TP313689

Eph receptor A1 (EPHA1) (NM_005232) Human Recombinant Protein

Product data:

Product Type: Recombinant Proteins
Description: Recombinant protein of human EPH receptor A1 (EPHA1), 20 µg
Species: Human
Expression Host: HEK293T
Expression cDNA Clone or AA Sequence: >RC213689 representing NM_005232
Red=Cloning site **Green**=Tags(s)

MERRWPLGLGLVLLLCAPLPPGAHAKEVTLMDTSKAQGELGWLLDPPKDGWSEQQILNGTPLYMYQDCP
MQGRRDTHWLRSNWYRGEASRVHVELQFTVRDCKSFPGGAGPLGCKETFNLLYMESDQDVGILRRP
LFQKVTTVAADQSFTIRD LASGSVKLNVERCSLGRLTRRGLYLAFHNPGACVALSVRVFYQRCPETLNG
LAQFPDTPGPAGLVEVAGTCLPHARASPRPSGAPRMHCSPDGEWLVVGRCHCEPGYEEGGSGEACVAC
PSGSYRMDMDTPHCLTCPQQSTAASEGATICTCESGHYRAPGEGPQVACTGPPSAPRNLSFSASGTQLSL
RWEPPADTGGRQDVRYSVRCSQCQGT AQDGGPCQPCGVGVHFSFGARGLTTPAVHVNGLEPYANYTFNVE
AQNGVSGLGSSGHASTSVSISMGHAESLSGLSLRLVKKEPRQLELTWAGSRPRSPGANLTYELHVLNQDE
ERYQMVLEPRVLLTELQPDITYIVRVRMLTPLGPGPFSPDHEFRTSPPVSRGLTGGEIVAVIFGLLLGAA
LLLILVFRSRRARQRQRQRDRATDVDREDKLWLKPYVDLQAYEDPAQGALDFTRELDPAWLMVDTVI
GEGEFGEVYRGT LRLPSQDCKTVAIKTLKDTSPGGQWWNFLREATIMGQFSPHILHLEGVVTKRKPI MI
ITEFMENGALDAFLREREDQLVPGQLVAMLQGIASGMNYLSNHNYVHRDLAARNILVNQNLCKKVSDFGL
TRLLDDFDGT YETQGGKIPRWTAPEAIAHRIFTASDVWSFGIVMWEVLSFGDKPYGEMSNQEVMSKIE
DG YRLPPPVD CPAPLYELMKNCWAYDRARRPHFQKLQAHLEQLLANPHSLRTIANFDPRVTLR LPSLSGS
DGIPYRTVSEWLESIRMKRYILHFHSAGLDTMECVLELTAEDLTQMGITLPGHQKRILCSIQGFKD

TRTRPLEQKLISEEDLAANDILDYKDDDDKV

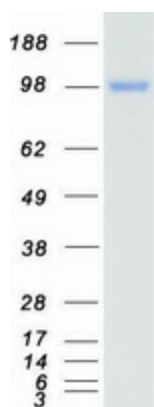
Tag: C-Myc/DDK
Predicted MW: 107.9 kDa
Concentration: >0.05 µg/µL as determined by microplate BCA method
Purity: > 80% as determined by SDS-PAGE and Coomassie blue staining
Buffer: 25 mM Tris-HCl, 100 mM glycine, pH 7.3, 10% glycerol
Preparation: Recombinant protein was captured through anti-DDK affinity column followed by conventional chromatography steps.



[View online >](#)

Note:	For testing in cell culture applications, please filter before use. Note that you may experience some loss of protein during the filtration process.
Storage:	Store at -80°C.
Stability:	Stable for 12 months from the date of receipt of the product under proper storage and handling conditions. Avoid repeated freeze-thaw cycles.
RefSeq:	NP_005223
Locus ID:	2041
UniProt ID:	P21709
RefSeq Size:	3367
Cytogenetics:	7q34-q35
RefSeq ORF:	2928
Synonyms:	EPH; EPHT; EPHT1
Summary:	This gene belongs to the ephrin receptor subfamily of the protein-tyrosine kinase family. EPH and EPH-related receptors have been implicated in mediating developmental events, particularly in the nervous system. Receptors in the EPH subfamily typically have a single kinase domain and an extracellular region containing a Cys-rich domain and 2 fibronectin type III repeats. The ephrin receptors are divided into 2 groups based on the similarity of their extracellular domain sequences and their affinities for binding ephrin-A and ephrin-B ligands. This gene is expressed in some human cancer cell lines and has been implicated in carcinogenesis. [provided by RefSeq, Jul 2008]
Protein Families:	Druggable Genome, Protein Kinase, Transmembrane
Protein Pathways:	Axon guidance

Product images:



Coomassie blue staining of purified EPHA1 protein (Cat# TP313689). The protein was produced from HEK293T cells transfected with EPHA1 cDNA clone (Cat# [RC213689]) using MegaTran 2.0 (Cat# [TT210002]).