

## Product datasheet for **TP313678L**

### UBE2Q1 (NM\_017582) Human Recombinant Protein

#### Product data:

Product Type:	Recombinant Proteins
Description:	Recombinant protein of human ubiquitin-conjugating enzyme E2Q family member 1 (UBE2Q1), 1 mg
Species:	Human
Expression Host:	HEK293T
Expression cDNA Clone or AA Sequence:	>RC213678 representing NM_017582 <b>Red</b> =Cloning site <b>Green</b> =Tags(s)
	<p>MQQPQPQGQQPGPGQQLGGQGAAPGAGGGPGGGPGPGPCLRRELKLESIFHRGHERFRIASACLDELS CEFLAGAGGAGAGAAPGPHLPPRGSVPGDPVRIHCNITESYPVPPPIWSVESDDPNLA AVLRLVDIKK GNTLLQLHLKRIISDLCKLYNLPQHDPVEMLDQPLPAEQCTQEDVSSSEDEDEMPEDTEDLDHYEMKEEE PAEGKKSEDDGIGKENLAILEIKIKKNQRQDYLN GAVSGSVQATDRLMKELRDIYRSQSFKGGNYAVELVN DSLVDWNVKKLLKVDQDSALHNDLQILKEKEGADFILLNFSFKDNFPDPPFVRVWSPVLSGGYVLGGGAI CMELLTKQGWSSAYSIESVIMQISATLVKGGKARVQFGANKSQYSLTRAQQSYKSLVQIHEKNGWYTPPKE DG</p> <p><b>TRTRPLEQKLISEEDLAANDILDYKDDDDKV</b></p>
Tag:	C-Myc/DDK
Predicted MW:	45.9 kDa
Concentration:	>0.05 µg/µL as determined by microplate BCA method
Purity:	> 80% as determined by SDS-PAGE and Coomassie blue staining
Buffer:	25 mM Tris-HCl, 100 mM glycine, pH 7.3, 10% glycerol
Preparation:	Recombinant protein was captured through anti-DDK affinity column followed by conventional chromatography steps.
Note:	For testing in cell culture applications, please filter before use. Note that you may experience some loss of protein during the filtration process.
Storage:	Store at -80°C.
Stability:	Stable for 12 months from the date of receipt of the product under proper storage and handling conditions. Avoid repeated freeze-thaw cycles.



[View online »](#)

RefSeq: [NP\\_060052](#)

Locus ID: 55585

UniProt ID: [Q7Z7E8](#)

RefSeq Size: 3223

Cytogenetics: 1q21.3

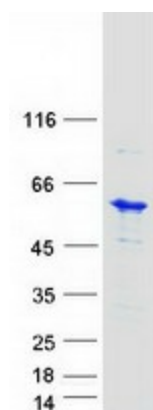
RefSeq ORF: 1266

Synonyms: GTAP; NICE-5; NICE5; PRO3094; UBE2Q

**Summary:** The modification of proteins with ubiquitin is an important cellular mechanism for targeting abnormal or short-lived proteins for degradation. Ubiquitination involves at least three classes of enzymes: ubiquitin-activating enzymes (E1s), ubiquitin-conjugating enzymes (E2s), and ubiquitin-protein ligases (E3s). This gene encodes a member of the E2 ubiquitin-conjugating enzyme family. The encoded protein is 98% identical to the mouse counterpart. [provided by RefSeq, Jul 2008]

**Protein Pathways:** Ubiquitin mediated proteolysis

### Product images:



Coomassie blue staining of purified UBE2Q1 protein (Cat# [TP313678]). The protein was produced from HEK293T cells transfected with UBE2Q1 cDNA clone (Cat# [RC213678]) using MegaTran 2.0 (Cat# [TT210002]).