

Product datasheet for **TP313673M**

ASD3 (MYH6) (NM_002471) Human Recombinant Protein

Product data:

Product Type:	Recombinant Proteins
Description:	Purified recombinant protein of Homo sapiens myosin, heavy chain 6, cardiac muscle, alpha (MYH6), 100 µg
Species:	Human
Expression Host:	HEK293T



[View online »](#)

Expression cDNA >RC213673 representing NM_002471
 Clone or AA Sequence: **Red**=Cloning site **Green**=Tags(s)

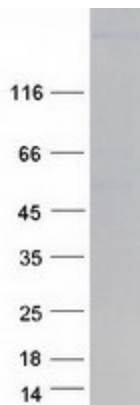
MTDAQMADFGAAAQYLRKSEKERLEAQTRPDIRTECFVPDDKEEFVKAKILSREGGK VIAETENGKTVT
 VKEDQVLQQNPPKFDKIEDMAMLTFLHEPAVLFNLKERYAAWMIYTYSGLFCVTVNPNYKWLVPVYNAEVVA
 AYRGKKRSEAPPHIFSISDNAYQYMLTDRENQSILITGESGAGKTVNTKRVIQYFASIAAIGDRGKKDNA
 NANKGTLEDQIIQANPALEAFGNAKTVRNDNSSRFGKFIRIHFGATGK LASADIETYLLEKSRVIFQLKA
 ERNYHIFYQILSNKKPELLDMLLVTNPNYDYAFVSQGEVSVASIDDSEELMATDSAFDVLGFTSEEKAGV
 YKLTGAIMHYGNMFKKQKQREEQAEPDGTEDADKSAYLMGLNSADLLKGLCHPRVKV GNEYVTKGQSVQQ
 VYYSIGALAKAVYEKMFNWMVTRINATLETQPRQYFIGVLDIAGFEIFDFNSFEQLCINFTNEKLQFF
 NHHMFVLEQEEYKKEGIEWTFIDFGMDLQACIDLIEKPMGIMSILEEECMFPKATDMTFKAKLYDNHLGK
 SNNFQKPRNIK GKQEAHFSLIHYAGTVDYNILGWLEKNKDPLNETVVALYQKSSLLMATLFFSYATADT
 GD SGKSKGGKKKSSSFQTVSALHRENLNKLMTNLRTTHPHFVRCIIPNERKAPGVMDNPLVMHQLRCNGV
 LEGIRICRKGFPNRILYGD FRQRYRILNPVAIPEGQFIDSRKGTEKLLSSLDIDHNQYKFGHTKVFFKAG
 LLGLLEEMRDERLSRIITRMQAQARGQLMRIEFKIVERRDALLVIQWNIRAFMGVKNWPWMKLYFKIKP
 LLKSAETEKEMATMKEEFGRIKETLEKSEARRKELEEKMVSLLEQKNDLQLQVQAEQDNLND AEERCDQL
 IKNKIQLEAKVKEMNERLEDEEEMNAELTAKKRKLEDECESELKDKIDDLELTLAKVEKEKHATENKVKNL
 TEEMAGLDEIIAKLTKEKKALQEAHQALDDLQVEEDKVNSLSKSKVKLEQQVDDLEGSLEQEKKVRMDL
 ERAKRKLEGLDLKTQESIMDLENDKLQLEEKLKKKEFDINQQNSKIEDEQV LALQLQKKLKENQARIEEL
 EEELEAERTARAKVEKLRSDLSRELEEISERLEEAGGATSVQIEMNKKREAEFQKMRRDLEEATLQHEAT
 AAALRKKHADSV AELGEQIDNLQRVKQKLEKEKSEFKLELDDVTSNMEQIIKAKANLEKVSRTLEDQANE
 YRVKLEEAQRSLNDFTTQRAKLQTENGELARQLEEKEALISQLTRGKLSYTTQQMEDLKRQLEEEGKAKNA
 LAHALQSARHDCDLLREQYEEETEAKAELQRVLSKANSEVAQWRTKYETDAIQRTEELEEAKKLAQRLQ
 DAEAEAVEAVNAKCSSLEKTKHRLQNEIEDLMVDVERSNA AAAALDKKQRNFDKILAEWKQKYEESQSELE
 SSQKEARSLSTELFKLNAYEESLEHLETFKRENKNLQEEISDLTEQLGEGGKNVHELEKVRKQLEVEKL
 ELQSALEEAESLEHEEGKILRAQLEFNQIKAEIERKLAEKDEEMEQAQRNHQRVVDLSLQTSLDAETRSR
 NEVLRVKKKMEGDLNEMEIQLSHANRMAAEAQKQVKSLSLLKDTQIQLDDAVRANDDLKENIAIVERRN
 NLLQAELEELRAVVEQTERSRLAEQELIETSERVQLLHSQNTSLINQKKKMESDLTQLQSEVEEAVQEC
 RNAEEKAKKAITDAAMMAEELKKEQD TSAHLERMKKNMEQTIKDLQHRLDEAEQIALKGGKKQLQKLEAR
 VRELEGELEAEQKRNAESVKGMRKSERRIKELTYQTEEDKKNLLRLQLDVLQKLVKAYKRQAEAEAEQ
 ANTNL SKFRKVQHELDEAEERADIAESQVNKLRAKSRDIGAKQKMHDEE

TRTRPLEQKLISEEDLAANDILDYKDDDDKV

Tag: C-Myc/DDK
Predicted MW: 223.6 kDa
Concentration: >0.05 µg/µL as determined by microplate BCA method
Purity: > 80% as determined by SDS-PAGE and Coomassie blue staining
Buffer: 25 mM Tris-HCl, 100 mM glycine, pH 7.3, 10% glycerol
Preparation: Recombinant protein was captured through anti-DDK affinity column followed by conventional chromatography steps.

Note:	For testing in cell culture applications, please filter before use. Note that you may experience some loss of protein during the filtration process.
Storage:	Store at -80°C.
Stability:	Stable for 12 months from the date of receipt of the product under proper storage and handling conditions. Avoid repeated freeze-thaw cycles.
RefSeq:	NP_002462
Locus ID:	4624
UniProt ID:	P13533
RefSeq Size:	5941
Cytogenetics:	14q11.2
RefSeq ORF:	5817
Synonyms:	alpha-MHC; ASD3; CMD1EE; CMH14; MYHC; MYHCA; SSS3
Summary:	Cardiac muscle myosin is a hexamer consisting of two heavy chain subunits, two light chain subunits, and two regulatory subunits. This gene encodes the alpha heavy chain subunit of cardiac myosin. The gene is located approximately 4kb downstream of the gene encoding the beta heavy chain subunit of cardiac myosin. Mutations in this gene cause familial hypertrophic cardiomyopathy and atrial septal defect 3. [provided by RefSeq, Feb 2017]
Protein Pathways:	Cardiac muscle contraction, Dilated cardiomyopathy, Hypertrophic cardiomyopathy (HCM), Tight junction, Viral myocarditis

Product images:



Coomassie blue staining of purified MYH6 protein (Cat# [TP313673]). The protein was produced from HEK293T cells transfected with MYH6 cDNA clone (Cat# [RC213673]) using MegaTran 2.0 (Cat# [TT210002]).