

## Product datasheet for **TP313673L**

### **ASD3 (MYH6) (NM\_002471) Human Recombinant Protein**

#### **Product data:**

Product Type:	Recombinant Proteins
Description:	Purified recombinant protein of Homo sapiens myosin, heavy chain 6, cardiac muscle, alpha (MYH6), 1 mg
Species:	Human
Expression Host:	HEK293T



[View online »](#)

Expression cDNA >RC213673 representing NM\_002471  
 Clone or AA Sequence: **Red**=Cloning site **Green**=Tags(s)

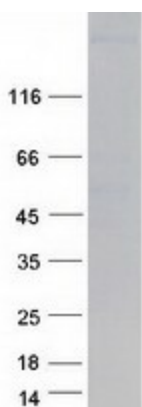
MTDAQMADFGAAAQYLRKSEKERLEAQTRPDIRTECFVPDDKEEFVKAKILSREGGK VIAETENGKTVT  
 VKEDQVLQQNPPKFDKIEDMAMLTFLHEPAVLFNLKERYAAWMIYTYSGLFCVTVNPNYKWLVPVYNAEVVA  
 AYRGKKRSEAPPHIFSISDNAYQYMLTDRENQSILITGESGAGKTVNTKRVIQYFASIAAIGDRGKKDNA  
 NANKGTLEDQIIQANPALEAFGNAKTVRNDNSSRFGKFIRIHFGATGK LASADIETYLLEKSRVIFQLKA  
 ERNYHIFYQILSNKKPELLDMLLVTNPNPYDYAFVSQGEVSVASIDDSEELMATDSAFDVLGFTSEEKAGV  
 YKLTGAIMHYGNMFKKQKQREEQAEPDGTEDADKSAYLMGLNSADLLKGLCHPRVKV GNEYVTKGQSVQQ  
 VYYSIGALAKAVYEKMFNWMVTRINATLETQPRQYFIGVLDIAGFEIFDFNSFEQLCINFTNEKLQFF  
 NHMFMVLEQEEYKKEGIEWTFIDFGMDLQACIDLIEKPMGIMSILEEECMFPKATDMTFKAKLYDNHLGK  
 SNNFQKPRNIKGKQEAHFSLIHAGTVDYNILGWLEKNKDPLNETVVALYQKSSLKLMATLFFSYATADT  
 GD SGKSKGGKKKSSSFQTVSALHRENLNKLMTNLRTTHPHFVRCIIPNERKAPGVMDNPLVMHQLRCNGV  
 LEGIRICRKGFPNRILYGD FRQRYRILNPVAIPEGQFIDSRKGTEKLLSSLDIDHNQYKFGHTKVFFKAG  
 LLGLLEEMRDERLSRIITRMQAQARGQLMRIEFKIVERRDALLVIQWNIRAFMGVKNWPWMKLYFKIKP  
 LLKSAETEKEMATMKEEFGRIKETLEKSEARRKELEEKMVSLLEQKNDLQLQVQAEQDNLNDAEERCDQL  
 IKNKIQLEAKVKEMNERLEDEEEMNAELTAKKRKLEDECESELKDKIDDLELTLAKVEKEKHATENKVKNL  
 TEEMAGLDEIIAKLTKEKKALQEAHQALDDLQVEEDKVNSLSKSKVKLEQQVDDLEGSLEQEKKVRMDL  
 ERAKRKLEGLDLKTQESIMDLENDKLQLEEKLKKKEFDINQQNSKIEDEQV LALQLQKCLKENQARIEEL  
 EEELEAERTARAKVEKLRSDLSRELEEISERLEEAGGATSVQIEMNKKREAEFQKMRRDLEEATLQHEAT  
 AAALRKKHADSV AELGEQIDNLQRVKQKLEKEKSEFKLELDDVTSNMEQIIKAKANLEKVSRTLEDQANE  
 YRVKLEEAQRSLNDFTTQRAKLQTENGELARQLEEKEALISQLTRGKLSYQQMEDLKRQLEEEGKAKNA  
 LAHALQSARHDCDLLREQYEEETEAKAELQRVLSKANSEVAQWRTKYETDAIQRTEEEEAKKLAQRLQ  
 DAEAEAVEAVNAKCSSLEKTKHRLQNEIEDLMVDVERSNAALDKKQRNFDKILAEWKQKYEESQSELE  
 SSQKEARSLSTELFKLNAYEESLEHLETFKRENKNLQEEISDLTEQLGEGGKNVHELEKVRKQLEVEKL  
 ELQSALEEAESLEHEEGKILRAQLEFNQIKAEIERKLAEKDEEMEQAQRNHQRVDSLQTS LDAETRSR  
 NEVLRVKKKMEGDLNEMEIQLSHANRMAAEAQKQVKSLSLLKDTQIQLDDAVRANDDLKENIAIVERRN  
 NLLQAELEELRAVVEQT ERSRKLAEQELIETSERVQLLHSQNTSLINQKKKMESDLTQLQSEVEEAVQEC  
 RNAEEKAKKAITDAAMMAEELKKEQD TSAHLERMKKNMEQTIKDLQHRLDEAEQIALKGGKKQLQKLEAR  
 VRELEGELEAEQKRNAESVKGMRKSERRIKELTYQTEEDKKNLLRLQDLVDK LQLKVKAYKRQAEAEAEQ  
 ANTNL SKFRKVQHELDEAEERADIAESQVNKLRAKSRDIGAKQKMHDEE

**TRTRPLEQKLISEEDLAANDILDYKDDDDKV**

**Tag:** C-Myc/DDK  
**Predicted MW:** 223.6 kDa  
**Concentration:** >0.05 µg/µL as determined by microplate BCA method  
**Purity:** > 80% as determined by SDS-PAGE and Coomassie blue staining  
**Buffer:** 25 mM Tris-HCl, 100 mM glycine, pH 7.3, 10% glycerol  
**Preparation:** Recombinant protein was captured through anti-DDK affinity column followed by conventional chromatography steps.

<b>Note:</b>	For testing in cell culture applications, please filter before use. Note that you may experience some loss of protein during the filtration process.
<b>Storage:</b>	Store at -80°C.
<b>Stability:</b>	Stable for 12 months from the date of receipt of the product under proper storage and handling conditions. Avoid repeated freeze-thaw cycles.
<b>RefSeq:</b>	<a href="#">NP_002462</a>
<b>Locus ID:</b>	4624
<b>UniProt ID:</b>	<a href="#">P13533</a>
<b>RefSeq Size:</b>	5941
<b>Cytogenetics:</b>	14q11.2
<b>RefSeq ORF:</b>	5817
<b>Synonyms:</b>	alpha-MHC; ASD3; CMD1EE; CMH14; MYHC; MYHCA; SSS3
<b>Summary:</b>	Cardiac muscle myosin is a hexamer consisting of two heavy chain subunits, two light chain subunits, and two regulatory subunits. This gene encodes the alpha heavy chain subunit of cardiac myosin. The gene is located approximately 4kb downstream of the gene encoding the beta heavy chain subunit of cardiac myosin. Mutations in this gene cause familial hypertrophic cardiomyopathy and atrial septal defect 3. [provided by RefSeq, Feb 2017]
<b>Protein Pathways:</b>	Cardiac muscle contraction, Dilated cardiomyopathy, Hypertrophic cardiomyopathy (HCM), Tight junction, Viral myocarditis

### Product images:



Coomassie blue staining of purified MYH6 protein (Cat# [TP313673]). The protein was produced from HEK293T cells transfected with MYH6 cDNA clone (Cat# [RC213673]) using MegaTran 2.0 (Cat# [TT210002]).