

Product datasheet for **TP313658M**

GP210 (NUP210) (NM_024923) Human Recombinant Protein

Product data:

Product Type:	Recombinant Proteins
Description:	Recombinant protein of human nucleoporin 210kDa (NUP210), 100 µg
Species:	Human
Expression Host:	HEK293T



[View online »](#)

Expression cDNA Clone or AA Sequence: >RC213658 representing NM_024923
Red=Cloning site Green=Tags(s)

MAARGRGLLLLTLSVLLAAGPSAAAALNIPKVVLLPFTRATRVNFTLESEGCRYWLSTRPEVASIEPLG
 LDEQQCSQKAVVQARLTQPARLTSIIFAEDITGQVLRCDIVLIHQIIVSTTRELYLEDSPLELKIQ
 ALDSEGNFTSTLAGLVFEWTIVKDSEADRFSDSHNALRILTFLESTYIPPSYISEMEKAAKQGDILVSG
 MKTGSSKLKARIQEAVYKNVRPAEVRLILENILLNPAYDVYLMVGTSHYKVVQKIRQGKITELSMPSDQ
 YELQLQNSIPGPEGDPARPVAVLAQDTSMTALQLGQSSLVLGHRIRMQGASRLPNSTIYVVEPGYLG
 TVHPGDRWVLETGRLYEITIEVDFDKFSNKVYVSDNIRIETVLPAEFFEVLSSSQNGSYHRIRALKRGQTA
 IDAALTSVDQDGGVHILQVPVWNQVEIHIPITLYPSILTFPWQPKTGAYQYTIRAHGGSGNFSWSS
 SHLVATVTVKGVMTTGS DIGFSVIQAHDVQNPLHFGEMKVYVIEPHSMEFAPCQVEARVQGALPLRIS
 GLMPGGASEVTLSDCSHFDLAVEVENQGVFQPLPGRPLPPGSEHCSGIRVKAQAQGSTLLVSYRHGHVH
 LSAKITIAAYLPLKAVDPSSVALVTLGSSKEMLFEGGPRPWILEPSKFFQNVTAEDTDSIGLALFAPHSS
 RNYQQHWILVTCQALGEQVIALSVGNKPSLTNPFPAVEPAVVKFVCAPPSRLTLAPVYTSPQLDMSCPLL
 QQNKQVVPVSSHRLDLAAYDQEGRRFDNFSSLSIQWESTRPLASIEPELPMQLVSDDESQKQLH
 GLQAILVHEASGTTATATATGYQESHSSARTKQPHDPLVPLSASIELILVEDVRVSPPEVTIYNHPGI
 QAELRIREGSGYFFLNTSTADVVKVAYQEARGVAMVHPLLPGSSTIMIHDLCVFPAPAKAVVYVSDIQE
 LYIRVVDKVEIGTKVAYVRVLDLHKKPFLAKYFPFMDLKLRAASPIITLVALDEALDNYTITFLIRGVA
 IGQTSLTASVTNKAGQRINSAPQQIEVFPFRLMPRKVTLIGATMQVTSEGGPQPQSNILFSISNESVA
 LVSAAGLVQGLAIGNGTVSGLVQAVDAETGKVVISQDLVQVEVLLLRVIRAPIMRMRTGTQMPIYVT
 GITNHQNPFSFGNAVPLTFHWSVTKRDVLDLRRGRHHEASIRLPSQYNFAMNVLGRVKGRTGLRVVVKAV
 DPTSGQLYGLARELSDEIQVQVFEKLQLLNPEIEAEQILMSPNSYIKLQTNRDGAASLSYRVLDGPEKVP
 VVHVEKGLASGSMIGTSTIEVIAQEPFGANQTIIVAVKVSPVSYLRVSMSPVLHTQNKEALVAVPLGM
 TVTFTVHFHDNSGDVFAHSSVLFATNRDDFVQIGKGPNTNCTVVRTVSVGLTLLRVWDAEHPGLSDFM
 PLPVLQAISPELSGAMVVDVLCATVLTSLGLESGTWSSANSILHIDPKTGVAVARAVGSVTVVYVEVA
 GHLRTYKEVWVSPQRIMARHLHPIQTSFQEATASKVIVAVGDRSSNLRGECTPTQREVIQALHPETLIS
 CQSQFKPAVDFPQDVFVTEPQFDALGQYFCSITMHRITDKQRKHLMSKKTALVVSASLSSSHFSTEQ
 VGAEVPFSPGLFADQAEILLSNHYTSSEIRVFGAPEVLENLEVKSGSPAVLAFAKEKSFGWPSFITYTVG
 VLDPAAGSQGPLSTTLTFSSPVTNQAIAIPVTVAFFVDRRGGPYGASLFQHFLDSYQVMFFTLFALLAG
 TAVMIIAYHTVCTPRDLAVPAALTPRASPGRHSPHYFAASSPTSPNALPPARKASPPSGLWSPAYASH

TRTRPLEQKLISEEDLAANDILDYKDDDDKV

Tag: C-Myc/DDK

Predicted MW: 204.9 kDa

Concentration: >0.05 µg/µL as determined by microplate BCA method

Purity: > 80% as determined by SDS-PAGE and Coomassie blue staining

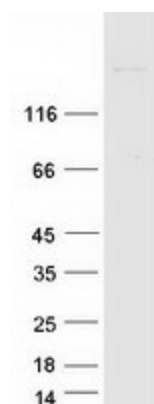
Buffer: 25 mM Tris-HCl, 100 mM glycine, pH 7.3, 10% glycerol

Preparation: Recombinant protein was captured through anti-DDK affinity column followed by conventional chromatography steps.

Note: For testing in cell culture applications, please filter before use. Note that you may experience some loss of protein during the filtration process.

Storage:	Store at -80°C.
Stability:	Stable for 12 months from the date of receipt of the product under proper storage and handling conditions. Avoid repeated freeze-thaw cycles.
RefSeq:	NP_079199
Locus ID:	23225
UniProt ID:	Q8TEM1
RefSeq Size:	7191
Cytogenetics:	3p25.1
RefSeq ORF:	5661
Synonyms:	GP210; POM210
Summary:	The nuclear pore complex is a massive structure that extends across the nuclear envelope, forming a gateway that regulates the flow of macromolecules between the nucleus and the cytoplasm. Nucleoporins are the main components of the nuclear pore complex in eukaryotic cells. The protein encoded by this gene is a membrane-spanning glycoprotein that is a major component of the nuclear pore complex. Multiple pseudogenes related to this gene are located on chromosome 3. [provided by RefSeq, Jul 2013]
Protein Families:	Transmembrane

Product images:



Coomassie blue staining of purified NUP210 protein (Cat# [TP313658]). The protein was produced from HEK293T cells transfected with NUP210 cDNA clone (Cat# [RC213658]) using MegaTran 2.0 (Cat# [TT210002]).