

Product datasheet for **TP313652M**

Epsin 2 (EPN2) (NM_014964) Human Recombinant Protein

Product data:

Product Type: Recombinant Proteins

Description: Recombinant protein of human epsin 2 (EPN2), transcript variant 2, 100 µg

Species: Human

Expression Host: HEK293T

Expression cDNA >RC213652 representing NM_014964

Clone or AA Red=Cloning site Green=Tags(s)

Sequence:

MTTSSIRRQMKNI VNNYSEAEIKVREATSNDPWGPSSSLMTEIADLTYNVVFSEIMSMVWKRLNDHGKN
WRHVYKAL TLLDYLIKTSERVAQQCRENIFAIQTLKDFQYIDRDGKDQGINVREKSKQLVALLKDEERL
KAERAQALKTKERMAQVATGMGSNQITFGRGSSQPNLSTSHSEQEY GKAGGSPASYHGSPEASLCPQHRT
GAPLGQSEELQPLSQRHPFLPHLGLASRPNGDWSQPCLTCDRAARATSPRVSELEQARPQTSGEELQL
QLALAMSREVAEQEERLRRGDDLRLQMALEESRRD TVKIPKKKEHGLPQQTTLLD LMDALPSSGPAAQK
AEPWGPSASTNQTNPWGGPAAPASTSDPWPSFGTKPAASIDPWGVPTGATAQSVPKNSDPWAASQQPASS
AGKRASDAWGAVSTTKPVSVSGSFELFSNLNGTIKDDFSEFDNLRTSKKTAESVTS LPSQNNGTTSPDPF
ESQPLTVASSKPSSARKTPESFLGPNAALVNLDSL VTRPAPPAQSLNPF LAPGAPATSAPVNP FQVNQPQ
PLTLNQLRGSPVLGTSTSF GPGPGVESMAVASMTS AAPQPALGATGSSLTPLGPAMMN MVG SVGIPPSAA
QATGTTNPFL

SGPTRRRLEQKLISEEDLAANDILDYKDDDDKV

Tag: C-Myc/DDK

Predicted MW: 68.3 kDa

Concentration: >0.05 µg/µL as determined by microplate BCA method

Purity: > 80% as determined by SDS-PAGE and Coomassie blue staining

Buffer: 25 mM Tris-HCl, 100 mM glycine, pH 7.3, 10% glycerol

Preparation: Recombinant protein was captured through anti-DDK affinity column followed by conventional chromatography steps.

Note: For testing in cell culture applications, please filter before use. Note that you may experience some loss of protein during the filtration process.

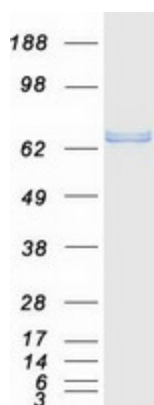
Storage: Store at -80°C.



[View online »](#)

Stability:	Stable for 12 months from the date of receipt of the product under proper storage and handling conditions. Avoid repeated freeze-thaw cycles.
RefSeq:	NP_055779
Locus ID:	22905
UniProt ID:	O95208
RefSeq Size:	4814
Cytogenetics:	17p11.2
RefSeq ORF:	1923
Synonyms:	EHB21
Summary:	This gene encodes a protein which interacts with clathrin and adaptor-related protein complex 2, alpha 1 subunit. The protein is found in a brain-derived clathrin-coated vesicle fraction and localizes to the peri-Golgi region and the cell periphery. The protein is thought to be involved in clathrin-mediated endocytosis. Alternate splicing of this gene results in multiple transcript variants encoding different isoforms. [provided by RefSeq, Jul 2008]
Protein Pathways:	Endocytosis

Product images:



Coomassie blue staining of purified EPN2 protein (Cat# [TP313652]). The protein was produced from HEK293T cells transfected with EPN2 cDNA clone (Cat# [RC213652]) using MegaTran 2.0 (Cat# [TT210002]).