

Product datasheet for TP313652L

Epsin 2 (EPN2) (NM_014964) Human Recombinant Protein

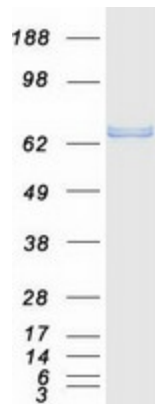
Product data:

Product Type:	Recombinant Proteins
Description:	Recombinant protein of human epsin 2 (EPN2), transcript variant 2, 1 mg
Species:	Human
Expression Host:	HEK293T
Expression cDNA Clone or AA Sequence:	>RC213652 representing NM_014964 Red =Cloning site Green =Tags(s)
	<p>MTTSSIRRQMKNI VNNYSEAEIKVREATSNDPWGPSSSLMTEIADLTYNVVFSEIMSMVWKRLNDHGKN WRHVYKAL TLLDYLIK TGSERVAQQCRENIFAIQTLKDFQYIDRDGKDQGINVREKSKQLVALLKDEERL KAERAQALKTKERMAQVATGMGSNQITFGRGSSQPNLSTSHSEQEY GKAGGSPASYHGSPEASLCPQHRT GAPLGQSEELQPLSQRHPFLPHLGLASRPNGDWSQPCLTCDRAARATSPRVSELEQARPQTSGEELQL QLALAMSREVAEQEERLRRGDDLRLQMALEESRRD TVKIPKKKEHGLPQQTTLLD LMDALPSSGPAAQK AEPWGPSASTNQTNPWGGPAAPASTSDPWPSFGTKPAASIDPWGVPTGATAQSVPKNSDPWAASQQPASS AGKRASDAWGAVSTTKPVSVSGSFELFSNLNGTIKDDFSEFDNLRTSKKTAESVTSLSQNNGTSPDPF ESQPLTVASSKPSSARKTPESFLGPNAALVNLDSL VTRPAPPAQSLNPFLAPGAPATSAPVNPQVNPQP PLTLNQLRGSPVLGTSTSFPGPGVESMAVASMTS AAPQPALGATGSSLTPLGPAMMNMVGSVGPSSAA QATGTTNPFL</p> <p>SGPTRRRLEQKLISEEDLAANDILDYKDDDDKV</p>
Tag:	C-Myc/DDK
Predicted MW:	68.3 kDa
Concentration:	>0.05 µg/µL as determined by microplate BCA method
Purity:	> 80% as determined by SDS-PAGE and Coomassie blue staining
Buffer:	25 mM Tris-HCl, 100 mM glycine, pH 7.3, 10% glycerol
Preparation:	Recombinant protein was captured through anti-DDK affinity column followed by conventional chromatography steps.
Note:	For testing in cell culture applications, please filter before use. Note that you may experience some loss of protein during the filtration process.
Storage:	Store at -80°C.



[View online »](#)

Stability:	Stable for 12 months from the date of receipt of the product under proper storage and handling conditions. Avoid repeated freeze-thaw cycles.
RefSeq:	NP_055779
Locus ID:	22905
UniProt ID:	O95208
RefSeq Size:	4814
Cytogenetics:	17p11.2
RefSeq ORF:	1923
Synonyms:	EHB21
Summary:	This gene encodes a protein which interacts with clathrin and adaptor-related protein complex 2, alpha 1 subunit. The protein is found in a brain-derived clathrin-coated vesicle fraction and localizes to the peri-Golgi region and the cell periphery. The protein is thought to be involved in clathrin-mediated endocytosis. Alternate splicing of this gene results in multiple transcript variants encoding different isoforms. [provided by RefSeq, Jul 2008]
Protein Pathways:	Endocytosis

Product images:

Coomassie blue staining of purified EPN2 protein (Cat# [TP313652]). The protein was produced from HEK293T cells transfected with EPN2 cDNA clone (Cat# [RC213652]) using MegaTran 2.0 (Cat# [TT210002]).