

Product datasheet for TP313641M

Pannexin 2 (PANX2) (NM_052839) Human Recombinant Protein

Product data:

Product Type:	Recombinant Proteins
Description:	Recombinant protein of human pannexin 2 (PANX2), 100 µg
Species:	Human
Expression Host:	HEK293T
Expression cDNA Clone or AA Sequence:	>RC213641 representing NM_052839 Red=Cloning site Green=Tags(s)

MHLLLEQSADMATALLAGEKLRRELILPGAQDDKAGALAALLLQKLELFPDRVVTIGTVLVPILLVTLVF
TKNFAEPIYCYTPHNFTRDQALYARGYCWTELRDALPGVDASLWPSLFEHKFLPYALLAFAAIMYVPAL
GWEFLASTRLTSELNFLQEQIDNCYHRAAEGRAPKIEKQIQSKGPGITEREKREIENAEKEKSPEQNLF
EKYLERRGRSNFLAKLYLARHVLILLSSAVPISYLCTYYATQKQNEFTCALGASPDGAAGAGPAVRVSK
LPSVQLQRRIAGVDIVLLCVMNLIILVNLHLFIFRKSNIKDKLHKVGIKTRRQWRRSQFCDINILAMF
CNENRDHIKSLNRLDFITNESDLMYDNVVRQLLAALAAQSNHDATPTVRDSGVQTVDPANPAEPDGAEP
PVVKRPRKKMKWIPTSNPLPQPFKEPLAIMRVENSKAEKPKPARRKTATDTLIAPLLDRSAHHYKGGGGD
PGPGPAPAPPPPAPDKKHARHFSLDVHPYILGTTKAKAEVPAALPASRSQEGGFLSQAEDCGLGLAPA
PIKDAPLPEKEIYPTEPARAGLPSGGPFHVRSPPAAPAVAPLTPASLGKAEPLTILSRNATHPLLHINT
LYEAREEEDGGPRLPQDVGDLIAIPAPQQILIATFDEPRTVSTVEF

TRTRPLEQKLISEEDLAANDILDYKDDDDKV

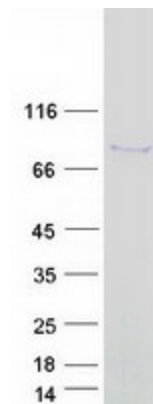
Tag:	C-Myc/DDK
Predicted MW:	74.3 kDa
Concentration:	>0.05 µg/µL as determined by microplate BCA method
Purity:	> 80% as determined by SDS-PAGE and Coomassie blue staining
Buffer:	25 mM Tris-HCl, 100 mM glycine, pH 7.3, 10% glycerol
Preparation:	Recombinant protein was captured through anti-DDK affinity column followed by conventional chromatography steps.
Note:	For testing in cell culture applications, please filter before use. Note that you may experience some loss of protein during the filtration process.
Storage:	Store at -80°C.



[View online »](#)

Stability:	Stable for 12 months from the date of receipt of the product under proper storage and handling conditions. Avoid repeated freeze-thaw cycles.
RefSeq:	NP_443071
Locus ID:	56666
UniProt ID:	Q96RD6 , B3KTT7 , Q495U3
RefSeq Size:	3069
Cytogenetics:	22q13.33
RefSeq ORF:	2031
Synonyms:	hPANX2; PX2
Summary:	The protein encoded by this gene belongs to the innexin family. Innexin family members are the structural components of gap junctions. This protein and pannexin 1 are abundantly expressed in central nervous system (CNS) and are coexpressed in various neuronal populations. Studies in <i>Xenopus</i> oocytes suggest that this protein alone and in combination with pannexin 1 may form cell type-specific gap junctions with distinct properties. Multiple transcript variants encoding different isoforms have been found for this gene. [provided by RefSeq, May 2009]
Protein Families:	Transmembrane

Product images:



Coomassie blue staining of purified PANX2 protein (Cat# [TP313641]). The protein was produced from HEK293T cells transfected with PANX2 cDNA clone (Cat# [RC213641]) using MegaTran 2.0 (Cat# [TT210002]).