

## Product datasheet for TP313641L

### Pannexin 2 (PANX2) (NM\_052839) Human Recombinant Protein

#### Product data:

Product Type:	Recombinant Proteins
Description:	Recombinant protein of human pannexin 2 (PANX2), 1 mg
Species:	Human
Expression Host:	HEK293T
Expression cDNA Clone or AA Sequence:	>RC213641 representing NM_052839 Red=Cloning site Green=Tags(s)

MHLLLEQSADMATALLAGEKLRRELILPGAQDDKAGALAALLLQKLELPFDRVVTIGTVLVPILLVTLVF  
TKNFAEEPIYCYTPHNFRDQALYARGYCWTELRDALPGVDASLWPSLFEHKFLPYALLAFAAIMYVPAL  
GWEFLASTRLTSELNFLQEQIDNCYHRAAEGRAPKIEKQIQSKGPGITEREKREIENAEKEKSPEQNLF  
EKYLERRGRSNFLAKLYLARHVLILLSSAVPISYLCTYYATQKQNEFTCALGASPDGAAGAGPAVRVSK  
LPSVQLQRRIAGVDIVLLCVMNLIILVNLHLFIFRKSNIKDKLHKVGIKTRRQWRRSQFCINILAMF  
CNENRDHIKSLNRLDFITNESDLMYDNVVRQLLAALAAQSNHDATPTVRDSGVQTVDPANPAEPDGAEP  
PVVKRPRKKMKWIPTSNPLPQPFKEPLAIMRVENSKAEKPKPARRKTATDTLIAPLLDRSAHHYKGGGGD  
PGPGPAPAPPPPAPDKKHARHFLDVHPYILGTTKAKAEVPAALPASRSQEGGFLSQAEDCGLGLAPA  
PIKDAPLPEKEIPYPTPARAGLPSGGPFHVRSPPAAPAVAPLTPASLGKAEPLTILSRNATHPLLHINT  
LYEAREEEDGGPRLPQDVGDLIAIPAPQQILIATFDEPRTVSTVEF

TRTRPLEQKLISEEDLAANDILDYKDDDDKV

Tag:	C-Myc/DDK
Predicted MW:	74.3 kDa
Concentration:	>0.05 µg/µL as determined by microplate BCA method
Purity:	> 80% as determined by SDS-PAGE and Coomassie blue staining
Buffer:	25 mM Tris-HCl, 100 mM glycine, pH 7.3, 10% glycerol
Preparation:	Recombinant protein was captured through anti-DDK affinity column followed by conventional chromatography steps.
Note:	For testing in cell culture applications, please filter before use. Note that you may experience some loss of protein during the filtration process.
Storage:	Store at -80°C.



[View online »](#)

**Stability:** Stable for 12 months from the date of receipt of the product under proper storage and handling conditions. Avoid repeated freeze-thaw cycles.

**RefSeq:** [NP\\_443071](#)

**Locus ID:** 56666

**UniProt ID:** [Q96RD6](#), [B3KTT7](#), [Q495U3](#)

**RefSeq Size:** 3069

**Cytogenetics:** 22q13.33

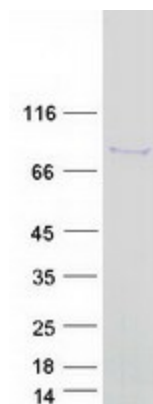
**RefSeq ORF:** 2031

**Synonyms:** hPANX2; PX2

**Summary:** The protein encoded by this gene belongs to the innexin family. Innexin family members are the structural components of gap junctions. This protein and pannexin 1 are abundantly expressed in central nervous system (CNS) and are coexpressed in various neuronal populations. Studies in *Xenopus* oocytes suggest that this protein alone and in combination with pannexin 1 may form cell type-specific gap junctions with distinct properties. Multiple transcript variants encoding different isoforms have been found for this gene. [provided by RefSeq, May 2009]

**Protein Families:** Transmembrane

### Product images:



Coomassie blue staining of purified PANX2 protein (Cat# [TP313641]). The protein was produced from HEK293T cells transfected with PANX2 cDNA clone (Cat# [RC213641]) using MegaTran 2.0 (Cat# [TT210002]).