

Product datasheet for TP313624M

SEZ6L (NM_021115) Human Recombinant Protein

Product data:

Product Type:	Recombinant Proteins
Description:	Purified recombinant protein of Homo sapiens seizure related 6 homolog (mouse)-like (SEZ6L), 100 µg
Species:	Human
Expression Host:	HEK293T
Expression cDNA Clone or AA Sequence:	>RC213624 representing NM_021115 Red=Cloning site Green=Tags(s)

MPAARPPAAGLRGISLFLALLLGSPAAALERDALPEGDASPLGPYLLPSGAPERGSPGKEHPEERWVTAP
PSSSQSAEVLGELVLDGTAPSAHHDIPALSPLLPEEARPKHALPPKKKLPKQVNSARKQLRPKATSAA
TVQRAGSQPASQGLDLLSSSTEKPGPPGDPDIVASEEASEVPLWDRKESAVPTTPAPLQISPFTSQPY
VAHTLPQRPEPGEPGDMAQEAPQEDTSPMALMDKGENELTGSASEESQETTTSTIITTTVITTEQAPAL
CSVSFSNPEGYIDSSDYPLLPLNNFLECTYNVTVYTYGYVELQVKSVDNSDGLSIRGVDGPTLTVLAN
QTLLVEGQVIRSPTNTISVYFRFTFQDDGLGTFQLHYQAFMLSCNFRPRPDSGDVTVMDLHSGGVAHFHCH
LGYELQGAKMLTCINASKPHWSSQEPICSAPCGGAVHNATIGRVLSPSPYENTNGSQFCIWTIEAPEGQK
LHLHFERLLLHDKDRMTVHSGQTNKSALLYDSLQTESVPEGLLSEGNTIRIEFTSDQARAASFTNIRFE
AFEKGHCYEPYIQNGNFTTSDPTYNIGTIVEFTCDPGHSLEQGPAAIECINVRDPYWNDTEPLCRAMCGG
ELSAVAGVWVSPNWPEPYVEGEDCIWKIHVGEEKRIFLDIQFLNLSNSDILTIYDGDVMPHILGQYLGN
SGPQKLYSSTPDLTIQFHSDPAGLIFGKGQGFIMNYIEVSRNDSKSDLPDIQNGWKTTSHTELVRGARIT
YQCDPGYDIVGSDTLTCQWDLWSWSDPPFCEKIMYCTDPGEVDHSTRLLISDPVLLVGTTIQYTCNPGFVL
EGSLLTCYSRETGTPIWTSRLPHCVSEESLACDNPGLPENGYQILYKRLYLPGESLTFMICYEGFELMGE
VTIRCILGQPSHWNGPLPVCKVNQDSFEHALEVAEAAAETSLEGGNMALAI FIPVLIISLLLG GAYIYIT
RCRYYSNLRPLMYSHPYSQITVETEFDNPIYETGETREYEVSI

TRTRPLEQKLISEEDLAANDILDYKDDDDKV

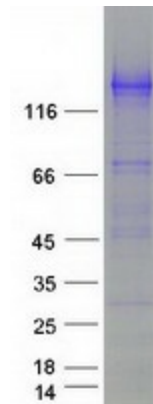
Tag:	C-Myc/DDK
Predicted MW:	109 kDa
Concentration:	>0.05 µg/µL as determined by microplate BCA method
Purity:	> 80% as determined by SDS-PAGE and Coomassie blue staining
Buffer:	25 mM Tris-HCl, 100 mM glycine, pH 7.3, 10% glycerol



[View online »](#)

Preparation:	Recombinant protein was captured through anti-DDK affinity column followed by conventional chromatography steps.
Note:	For testing in cell culture applications, please filter before use. Note that you may experience some loss of protein during the filtration process.
Storage:	Store at -80°C.
Stability:	Stable for 12 months from the date of receipt of the product under proper storage and handling conditions. Avoid repeated freeze-thaw cycles.
RefSeq:	NP_066938
Locus ID:	23544
UniProt ID:	Q9BYH1
RefSeq Size:	3424
Cytogenetics:	22q12.1
RefSeq ORF:	3072
Summary:	May contribute to specialized endoplasmic reticulum functions in neurons.[UniProtKB/Swiss-Prot Function]
Protein Families:	Druggable Genome, Transmembrane

Product images:



Coomassie blue staining of purified SEZ6L protein (Cat# [TP313624]). The protein was produced from HEK293T cells transfected with SEZ6L cDNA clone (Cat# [RC213624]) using MegaTran 2.0 (Cat# [TT210002]).