

Product datasheet for TP313617M

KIR2DS3 (NM_012313) Human Recombinant Protein

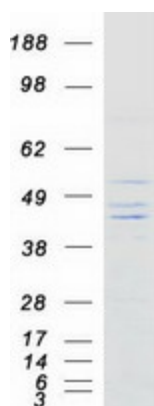
Product data:

Product Type:	Recombinant Proteins
Description:	Recombinant protein of human killer cell immunoglobulin-like receptor, two domains, short cytoplasmic tail, 3 (KIR2DS3), 100 µg
Species:	Human
Expression Host:	HEK293T
Expression cDNA Clone or AA Sequence:	>RC213617 representing NM_012313 Red =Cloning site Green =Tags(s) MSLMVISMACVGFFWLQGAWPHEGFRRKPSLLAHPGRLVKSEETVILQCWSDVMFEHFLLHREGTFNDT L RLIGEHIDGVSKANFSIGRMRQDLAGTYRCYGSVPHSPYQFSAPSDPLDIVITGLYEKPSLSAQPGPTVL AGESVTLSCSSWSSYDMYHLSTEGEAHERRFSAGPKVNGTFQADFPLGPATQGGTYRCFGSFHDSPYEWS KSSDLLVSVTGNPSNSWSPTEPSSKTGNPRHLHVLIGTSVVKLPFTILLFLLHRWCSDKKNASVMDQ GPAGNRTVNREDSDEQDHQEVSYA TR TRPLEQKLISEEDLAANDILDYKDDDDKV
Tag:	C-Myc/DDK
Predicted MW:	33.5 kDa
Concentration:	>0.05 µg/µL as determined by microplate BCA method
Purity:	> 80% as determined by SDS-PAGE and Coomassie blue staining
Buffer:	25 mM Tris-HCl, 100 mM glycine, pH 7.3, 10% glycerol
Preparation:	Recombinant protein was captured through anti-DDK affinity column followed by conventional chromatography steps.
Note:	For testing in cell culture applications, please filter before use. Note that you may experience some loss of protein during the filtration process.
Storage:	Store at -80°C.
Stability:	Stable for 12 months from the date of receipt of the product under proper storage and handling conditions. Avoid repeated freeze-thaw cycles.
RefSeq:	<u>NP_036445</u>


[View online »](#)

Locus ID:	3808
UniProt ID:	Q14952
RefSeq Size:	1113
Cytogenetics:	19q13.4
RefSeq ORF:	912
Synonyms:	NKAT7
Summary:	Killer cell immunoglobulin-like receptors (KIRs) are transmembrane glycoproteins expressed by natural killer cells and subsets of T cells. The KIR genes are polymorphic and highly homologous and they are found in a cluster on chromosome 19q13.4 within the 1 Mb leukocyte receptor complex (LRC). The gene content of the KIR gene cluster varies among haplotypes, although several "framework" genes are found in all haplotypes (KIR3DL3, KIR3DP1, KIR3DL4, KIR3DL2). The KIR proteins are classified by the number of extracellular immunoglobulin domains (2D or 3D) and by whether they have a long (L) or short (S) cytoplasmic domain. KIR proteins with the long cytoplasmic domain transduce inhibitory signals upon ligand binding via an immune tyrosine-based inhibitory motif (ITIM), while KIR proteins with the short cytoplasmic domain lack the ITIM motif and instead associate with the TYRO protein tyrosine kinase binding protein to transduce activating signals. The ligands for several KIR proteins are subsets of HLA class I molecules; thus, KIR proteins are thought to play an important role in regulation of the immune response. [provided by RefSeq, Jul 2008]
Protein Families:	Transmembrane
Protein Pathways:	Antigen processing and presentation, Natural killer cell mediated cytotoxicity

Product images:



Coomassie blue staining of purified KIR2DS3 protein (Cat# [TP313617]). The protein was produced from HEK293T cells transfected with KIR2DS3 cDNA clone (Cat# [RC213617]) using MegaTran 2.0 (Cat# [TT210002]).