

Product datasheet for **TP313583M**

MYLK2 (NM_033118) Human Recombinant Protein

Product data:

Product Type:	Recombinant Proteins
Description:	Recombinant protein of human myosin light chain kinase 2 (MYLK2), 100 µg
Species:	Human
Expression Host:	HEK293T
Expression cDNA Clone or AA Sequence:	>RC213583 protein sequence Red =Cloning site Green =Tags(s)

MATENGAVELGIQNPSTDKAPKGPTGERPLAAGKDPGPPDPKKAPDPPTLKKDAKAPASEKGDGTLAQPS
TSSQGPKEGDRGGGPAEGSAGPPAALPQQTATPETSVKKPKAEQGASGSQDPGKPRVGKKAEGQAAAR
RGSPAFLHSPSCPAIISSEKLLAKKPPSEASELTFEGVPMTHSPTDPRPAKAEEGKNILAESQKEVGEK
TPGQAGQAKMQGDTSRGIEFQAVPSEKSEVGQALCLTAREEDCFQILDCCPPPPAPFPHRMVELRTGNVS
SEFSMNSKEALGGGKFGAVCTCMEKATGLKLAAKVIKKQTPKDKEMVLEIEVMNQLNHRNLIQLYAAIE
TPHEIVLFMEYIEGGELFERIVDEYHLTEVDTMVFVRQICDGILFMHKMRVLHLDLKPENILCVNTTGH
LVKIIDFGLARRYNPNEKLVNFGTPEFLSPEVVNYDQISDKTDMWSMGVITYMLLSGLSPFLGDDDTET
LNNVLSGNWYFDEETFEAVSDEAKDFVSNLIVKDQRARMNAAQCLAHPWLNLAEKAKRCNRRLKSQILL
KKYLMKRRWKNFIAVSAANRFKKISSSGALMALGV

TRTRPLEQKLISEEDLAANDILDYKDDDDKV

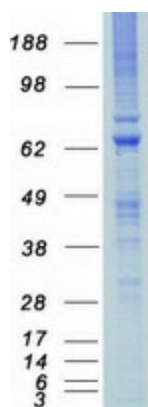
Tag:	C-Myc/DDK
Predicted MW:	64.5 kDa
Concentration:	>0.05 µg/µL as determined by microplate BCA method
Purity:	> 80% as determined by SDS-PAGE and Coomassie blue staining
Buffer:	25 mM Tris-HCl, 100 mM glycine, pH 7.3, 10% glycerol
Preparation:	Recombinant protein was captured through anti-DDK affinity column followed by conventional chromatography steps.
Note:	For testing in cell culture applications, please filter before use. Note that you may experience some loss of protein during the filtration process.
Storage:	Store at -80°C.



[View online »](#)

Stability:	Stable for 12 months from the date of receipt of the product under proper storage and handling conditions. Avoid repeated freeze-thaw cycles.
RefSeq:	NP_149109
Locus ID:	85366
UniProt ID:	Q9H1R3
RefSeq Size:	2793
Cytogenetics:	20q11.21
RefSeq ORF:	1788
Synonyms:	KMLC; MLCK; MLCK2; skMLCK
Summary:	This gene encodes a myosin light chain kinase, a calcium/calmodulin dependent enzyme, that is exclusively expressed in adult skeletal muscle. [provided by RefSeq, Jul 2008]
Protein Families:	Druggable Genome, Protein Kinase
Protein Pathways:	Calcium signaling pathway, Focal adhesion, Regulation of actin cytoskeleton, Vascular smooth muscle contraction

Product images:



Coomassie blue staining of purified MYLK2 protein (Cat# [TP313583]). The protein was produced from HEK293T cells transfected with MYLK2 cDNA clone (Cat# [RC213583]) using MegaTran 2.0 (Cat# [TT210002]).