

Product datasheet for **TP313583**

MYLK2 (NM_033118) Human Recombinant Protein

Product data:

Product Type: Recombinant Proteins

Description: Recombinant protein of human myosin light chain kinase 2 (MYLK2), 20 µg

Species: Human

Expression Host: HEK293T

Expression cDNA Clone >RC213583 protein sequence

or AA Sequence: **Red**=Cloning site **Green**=Tags(s)

MATENGAVELGIQNPSTDKAPKGPTGERPLAAGKDPGPPDPKKAPDPPTLKKDAKAPASEKGDGTLAQPS
TSSQGPKGEGDRGGGPAEGSAGPPAALPQQTATPETSVKKPKAEQ GASGSQDPGKPRVGKKA AEGQAAAR
RGSPAFLHSPSCPAIISSEKLLAKKPPSEASELTFEGVPMTHSPTDPRPAKAE EGNILAESQKEVGEK
TPGQAGQAKMQGDTSRGIEFQAVPSEKSEVGQALCLTAREEDCFQILDCCPPPPAPFPHRMVELRTGNVS
SEFSMNSKEALGGGKFGAVCTCMEKATGLKLA AKVIKKQTPKDKEMVLEIEVMNQLNHRNLIQLYAAIE
TPHEIVLFMEYIEGGELFERIVDEYHLTEVD TMVFVRQICDGILFMHKMRVLHLDLKPENILCVNTTGH
LVKIIDFGLARRYNPNEKLVNFGTPEFLSPEV VNYDQISDKTDMWSMGVITYMLLSGLSPFLGDDDTET
LNNVLSGNWYFDEETFEAVSDEAKDFVSNLIV KDQRARMNAAQCLAH PWLNNLAEKAKRCNRRLKSQILL
KKYLMKRRWKKNFIAVSAANRFKKISSSGALMALGV

TRTRPLEQKLISEEDLAANDILDYKDDDDKV

Tag: C-Myc/DDK

Predicted MW: 64.5 kDa

Concentration: >0.05 µg/µL as determined by microplate BCA method

Purity: > 80% as determined by SDS-PAGE and Coomassie blue staining

Buffer: 25 mM Tris-HCl, 100 mM glycine, pH 7.3, 10% glycerol

Preparation: Recombinant protein was captured through anti-DDK affinity column followed by conventional chromatography steps.

Note: For testing in cell culture applications, please filter before use. Note that you may experience some loss of protein during the filtration process.

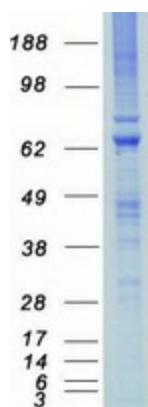
Storage: Store at -80°C.



[View online »](#)

Stability:	Stable for 12 months from the date of receipt of the product under proper storage and handling conditions. Avoid repeated freeze-thaw cycles.
RefSeq:	NP_149109
Locus ID:	85366
UniProt ID:	Q9H1R3
RefSeq Size:	2793
Cytogenetics:	20q11.21
RefSeq ORF:	1788
Synonyms:	KMLC; MLCK; MLCK2; skMLCK
Summary:	This gene encodes a myosin light chain kinase, a calcium/calmodulin dependent enzyme, that is exclusively expressed in adult skeletal muscle. [provided by RefSeq, Jul 2008]
Protein Families:	Druggable Genome, Protein Kinase
Protein Pathways:	Calcium signaling pathway, Focal adhesion, Regulation of actin cytoskeleton, Vascular smooth muscle contraction

Product images:



Coomassie blue staining of purified MYLK2 protein (Cat# TP313583). The protein was produced from HEK293T cells transfected with MYLK2 cDNA clone (Cat# [RC213583]) using MegaTran 2.0 (Cat# [TT210002]).