

Product datasheet for **TP313576L**

PLA2R (PLA2R1) (NM_001007267) Human Recombinant Protein

Product data:

Product Type: Recombinant Proteins
Description: Purified recombinant protein of Homo sapiens phospholipase A2 receptor 1, 180kDa (PLA2R1), transcript variant 2, 1 mg

Species: Human

Expression Host: HEK293T

Expression cDNA >RC213576 representing NM_001007267

Clone or AA **Red**=Cloning site **Green**=Tags(s)

Sequence:

MLLSPSLLLLLLGAPRGCAEGVAAALTPERLLEWQDKGIFVIQSESLKKCIQAGKSVLTLENCKQANKH
 MLWKWVSNHGLFNIGGSGCLGLNFSAPEQPLSLYECDSTLVSRLWRCNRKMITGPLQYSVQVAHDNTVVA
 SRKYIHKWISYSGGGDICEYLHKDLHTIKGNTHGMPCMFPFQYNHQWHHECTREGREDDLLWCATTSRY
 ERDEKWGFCPDPTSAEVCCTIWEKDLNHCYQFNLLSSLSWSEAHSSCQMGGTLLSITDETEENFIR
 EHMSSKTVEVWMGLNQLDEHAGWQWSDGTPNLNWSPEVNFEPFVEDHCGTFSSFMPSAWRSRDCESTL
 PYICKKYLNHIDHEIVEKDAWKYYATHCEPGWNPYNRNCYKQKKEKTWHEALRSCQADNSALIDITSLA
 EVEFLVTLGDNASETWIGLSSNKIPVSFEWSNDSSVIFTNWHTLEPHIFPNRSQLCVSAEQSEGHWKV
 KNCEERLFYICKKAGHVLSDAESGCQEGWERHGGFCYKIDTVLRSFDQASSGYCPPALVTITNRFEQAF
 ITSLISSVWKMKDSYFWIALQDQNDTGEYTWKPVGQKPEPVQYTHWNTHQPRYSGGCVAMRGRHPLGRWE
 VKHCRHFKAMSLCKQPVENQEKAEYEERWPFHPCYLDWESEPLASCFKVFHSEKVLKRTWREAEAFCE
 EFGAHLASFAHIEEENFVNELLHSKFNWTEERQFWIGFNKRNLNAGSWEWSDRTPVVSFLDNTYFGED
 ARNCAVYKANKTLLPLHCGSKREWICKIPRDVKPKIPFWYQYDVPWLFYQDAEYLFHTFASEWLNFEFVC
 SWLHSDLLTIHSAHEQEFIHKIKALSKEYGASWWIGLQEERANDEFWRDGTPIVYQNWDTGRERTVNNQ
 SQRCGFISITGLWGSEECVSMPKSICKRKKVWVWIEKKDTPKQHGTCPKGWLYFNYKCLLNIPKDPSS
 WKNWTHAQHFCAEEGGTLVAIESEVEQAFITMNLFGQTTSVWIGLQNDYETWLNKPKVVSNSWSPFDII
 NIPSHNTTEVQKHIPLCALLSSNPNFHFTGKWYFEDCGKEGYGFVCEKMQDTSGHGVTSDMYPMPNTLE
 YGNRTYKIINANMTWYAAIKTCLMHKAQLVSITDQYHQSFLLTVLNLRLGYAHWIGLFTTNDGLNFDWSDG
 TKSSFTFWKDEESSLLGDCVFADSNRWHSTACESFLQGAICHVPPETRQSEHPELCSETSIPWIKFKSN
 CYSFSTVLDSMSFEAAHEFCKKEGSNLLTIKDEAENAFLEELFAFGSSVQMVWLNQAFDGNK

TRTRPLEQKLISEEDLAANDILDYKDDDDKV

Tag: C-Myc/DDK

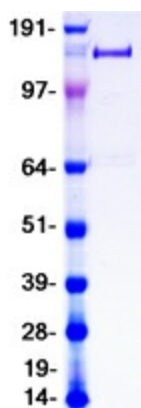
Predicted MW: 150.3 kDa



[View online »](#)

Concentration:	>0.05 µg/µL as determined by microplate BCA method
Purity:	> 80% as determined by SDS-PAGE and Coomassie blue staining
Buffer:	25 mM Tris-HCl, 100 mM glycine, pH 7.3, 10% glycerol
Preparation:	Recombinant protein was captured through anti-DDK affinity column followed by conventional chromatography steps.
Note:	For testing in cell culture applications, please filter before use. Note that you may experience some loss of protein during the filtration process.
Storage:	Store at -80°C.
Stability:	Stable for 12 months from the date of receipt of the product under proper storage and handling conditions. Avoid repeated freeze-thaw cycles.
RefSeq:	NP_001007268
Locus ID:	22925
UniProt ID:	Q13018
RefSeq Size:	5160
Cytogenetics:	2q24.2
RefSeq ORF:	3972
Synonyms:	CLEC13C; PLA2-R; PLA2G1R; PLA2IR; PLA2R
Summary:	This gene represents a phospholipase A2 receptor. The encoded protein likely exists as both a transmembrane form and a soluble form. The transmembrane receptor may play a role in clearance of phospholipase A2, thereby inhibiting its action. Polymorphisms at this locus have been associated with susceptibility to idiopathic membranous nephropathy. Alternatively spliced transcript variants encoding different isoforms have been identified.[provided by RefSeq, Sep 2010]
Protein Families:	Druggable Genome, Transmembrane

Product images:



Coomassie blue staining of purified PLA2R1 protein (Cat# [TP313576]). The protein was produced from HEK293T cells transfected with PLA2R1 cDNA clone (Cat# [RC213576]) using MegaTran 2.0 (Cat# [TT210002]).