

## Product datasheet for **TP313576**

### **PLA2R (PLA2R1) (NM\_001007267) Human Recombinant Protein**

#### **Product data:**

Product Type:	Recombinant Proteins
Description:	Purified recombinant protein of Homo sapiens phospholipase A2 receptor 1, 180kDa (PLA2R1), transcript variant 2, 20 µg
Species:	Human
Expression Host:	HEK293T



[View online »](#)

**Expression cDNA Clone or AA Sequence:** >RC213576 representing NM\_001007267  
Red=Cloning site Green=Tags(s)

MLLSPSLLLLLLLAPRGCAEGVAAALTPERLLEWQDKGIFVIQSESLKKCIQAGKSVLTLENCKQANKH  
 MLWKWVSNHGLFNIGGSGCLGLNFSAPSEQPLSLYECDSTLVSLRWRCNRKMITGPLQYSVQVAHDNTV  
 A  
 SRKYIHKWISYSGGGDICEYLHKDLHTIKGNTHGMPCMPFQYNHQWHHECTREGREDDLWCATTSR  
 Y  
 ERDEKWFGPCDPTSAEVGCDTIWEKDLNSHICYQFNLLSSLSWSEAHSSCQMGGTLLSITDETEENFIR  
 EHMSKTVVWMLNQLDEHAGWQWSDGTPLNLYLNWSPEVNFEPFVEDHCGTFSSFMPSAWRSRDC  
 ESTL  
 PYICKKYLNHIDHEIVEKDAWKYYATHCEPGWNPYNRCYKLQKEEKTWHEALRSCQADNSALIDITSLA  
 EVEFLVTLLGDENASETWIGLSSNKIPVSFEWSNDSSVIFTNWHTLEPHIFPNRSQLCVSAEQSEGHWKV  
 KNCEERLFYICKKAGHVLSDAESGCQEGWERHGGFCYKIDTVLRSFDQASSGYCPPALVTITNRFEQAF  
 ITSLISSVWKMKDSYFWIALQDQNDTGEYTWKPVGQKPEPVQYTHWNTHQPRYSGGCVAMRGRHPLGR  
 WE  
 VKHCRHFKAMSLCKQPVENQEKAIEEERWPFHPCYLDWESEPLASCCKVVFHSEKVLKRTWREAEAF  
 E  
 EFGAHLASFHIEEENFVNELLHSKFNWTEERQFWIGFNKRNPLNAGSWEWSDRTPVSSFLDNTYFGED  
 ARNCAVYKANKTLLPLHCGSKREWICKIPRDVKPKIPFWYQYDVPWLFYQDAEYLFHTFAEWLNFEFVC  
 SWLHSDLLTIHSAHEQEFIHKIKALSXYGASWWIGLQEERANDEFWRDGTPIVYQNWDTGRERTVNN  
 Q  
 SQRCGFISITGLWGSEECVSMPSICKRKKVWLIEKKDTPKQHGTCPKGWLYFNYKCLLLNIPKDPSS  
 WKNWTHAQHFCAEEGGTLVAIESEVEQAFITMNLFGQTTSVWIGLQNDYETWLNKPVVYSNWSPFDI  
 I  
 NIPSHNTTEVQKHIPLCALLSSNPNFHFTGKWYFEDCGKEGYGFVCEKMQDTSGHGVNTSDMYPMPNT  
 LE  
 YGNRTYKIINANMTWYAAIKTCLMHKAQLVSITDQYHQSFVTVLNRLGYAHWIGLFTTDNGLNFDWSD  
 G  
 TKSSFTFWKDEESSLLGDCVFADSNRWHSTACESFLQGAICHVPPETRQSEHPELCESETSIPWIKFKN  
 CYSFSTVLDSMSFEAAHEFCKKEGSNLLTIKDEAENAFLEELFAGSSVQMWWLNAQFDGNSK

TRTRPLEQKLISEEDLAANDILDYKDDDDKV

**Tag:** C-Myc/DDK

**Predicted MW:** 150.3 kDa

**Concentration:** >0.05 µg/µL as determined by microplate BCA method

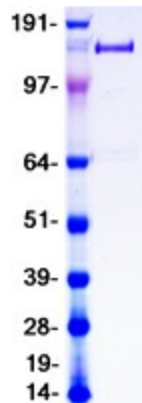
**Purity:** > 80% as determined by SDS-PAGE and Coomassie blue staining

**Buffer:** 25 mM Tris-HCl, 100 mM glycine, pH 7.3, 10% glycerol

**Preparation:** Recombinant protein was captured through anti-DDK affinity column followed by conventional chromatography steps.

<b>Note:</b>	For testing in cell culture applications, please filter before use. Note that you may experience some loss of protein during the filtration process.
<b>Storage:</b>	Store at -80°C.
<b>Stability:</b>	Stable for 12 months from the date of receipt of the product under proper storage and handling conditions. Avoid repeated freeze-thaw cycles.
<b>RefSeq:</b>	<a href="#">NP_001007268</a>
<b>Locus ID:</b>	22925
<b>UniProt ID:</b>	<a href="#">Q13018</a>
<b>RefSeq Size:</b>	5160
<b>Cytogenetics:</b>	2q24.2
<b>RefSeq ORF:</b>	3972
<b>Synonyms:</b>	CLEC13C; PLA2-R; PLA2G1R; PLA2IR; PLA2R
<b>Summary:</b>	This gene represents a phospholipase A2 receptor. The encoded protein likely exists as both a transmembrane form and a soluble form. The transmembrane receptor may play a role in clearance of phospholipase A2, thereby inhibiting its action. Polymorphisms at this locus have been associated with susceptibility to idiopathic membranous nephropathy. Alternatively spliced transcript variants encoding different isoforms have been identified.[provided by RefSeq, Sep 2010]
<b>Protein Families:</b>	Druggable Genome, Transmembrane

### Product images:



Coomassie blue staining of purified PLA2R1 protein (Cat# TP313576). The protein was produced from HEK293T cells transfected with PLA2R1 cDNA clone (Cat# [RC213576]) using MegaTran 2.0 (Cat# [TT210002]).