

Product datasheet for TP313549M

Dystrobrevin alpha (DTNA) (NM_032980) Human Recombinant Protein

Product data:

Product Type:	Recombinant Proteins
Description:	Recombinant protein of human dystrobrevin, alpha (DTNA), transcript variant 6, 100 µg
Species:	Human
Expression Host:	HEK293T
Expression cDNA Clone or AA Sequence:	>RC213549 representing NM_032980 Red=Cloning site Green=Tags(s)
	MFPDQPEKPLNLAHIVPPRPVTSMNDFLSHVPSSGSPFITRSSPPKDSEVEQNKLARAAPFLKGGK MLESSNRLDEEHRLIARYAARLAAESSSSQPPQQRSA PDISFTIDANKQQRQLIAELENKNREILQEIQR LRLEHEQASQPTPEKAQQNPTLLAELRLLRQRKDELEQRMSALQESRRELMVQLEGLMKLLKTQGAGSPR SSPHTISRPIPMPIRSASACSTPHTPQDSLTVGGDVQEAFAQSSRRNLRLNDLLVAADSITNTMSSLV KELNSEVGSETESNVDFARTQFEDLVPSPTSEKAFLAQIHARKPGYIHS GATTSTMRGDMVTEADDPY VQPEDENYENDSVRQLENELQMEEYLKQKLQDEAYQVSLQG
	TRTRPLEQKLISEEDLAANDILDYKDDDDKV
Tag:	C-Myc/DDK
Predicted MW:	43.4 kDa
Concentration:	>0.05 µg/µL as determined by microplate BCA method
Purity:	> 80% as determined by SDS-PAGE and Coomassie blue staining
Buffer:	25 mM Tris-HCl, 100 mM glycine, pH 7.3, 10% glycerol
Preparation:	Recombinant protein was captured through anti-DDK affinity column followed by conventional chromatography steps.
Note:	For testing in cell culture applications, please filter before use. Note that you may experience some loss of protein during the filtration process.
Storage:	Store at -80°C.
Stability:	Stable for 12 months from the date of receipt of the product under proper storage and handling conditions. Avoid repeated freeze-thaw cycles.
RefSeq:	NP_116762
Locus ID:	1837



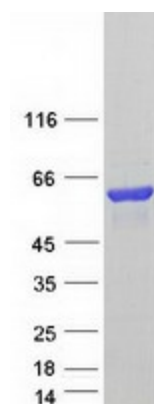
[View online »](#)

UniProt ID: [Q9Y4J8](#)
RefSeq Size: 5221
Cytogenetics: 18q12.1
RefSeq ORF: 1173
Synonyms: D18S892E; DRP3; DTN; DTN-A; LVNC1

Summary: The protein encoded by this gene belongs to the dystrobrevin subfamily of the dystrophin family. This protein is a component of the dystrophin-associated protein complex (DPC), which consists of dystrophin and several integral and peripheral membrane proteins, including dystroglycans, sarcoglycans, syntrophins and alpha- and beta-dystrobrevin. The DPC localizes to the sarcolemma and its disruption is associated with various forms of muscular dystrophy. Mutations in this gene are associated with left ventricular noncompaction with congenital heart defects. Multiple alternatively spliced transcript variants encoding different isoforms have been identified for this gene. [provided by RefSeq, Jul 2008]

Protein Families: Druggable Genome

Product images:



Coomassie blue staining of purified DTNA protein (Cat# [TP313549]). The protein was produced from HEK293T cells transfected with DTNA cDNA clone (Cat# [RC213549]) using MegaTran 2.0 (Cat# [TT210002]).