

Product datasheet for **TP313527M**

CYP2A7 (NM_000764) Human Recombinant Protein

Product data:

Product Type:	Recombinant Proteins
Description:	Recombinant protein of human cytochrome P450, family 2, subfamily A, polypeptide 7 (CYP2A7), transcript variant 1, 100 µg
Species:	Human
Expression Host:	HEK293T
Expression cDNA Clone or AA Sequence:	>RC213527 protein sequence Red =Cloning site Green =Tags(s)

MLASGLLLVALLA CLTVMV LMSVWQQRKSRGKLP PGPTLP PFIGNYLQLNTEHICDSIMKFSECYGPVFT
IHLGPRRAVVL CGHDAVREALVDQAE EFSGRGEQATFDWVFKGYGVAFSNGERAKQLLRFAIATLRDFGV
GKRGIEERIQEESGFLIEAIRSTHGANIDPTFFLSRTVSNVISSIVFGDRFDYEDKEFLSLLSVMLGIFQ
FTSTSTGQLYEMFSSVMKHLPGPQQQAFKLLQGLEDFIAKKVEHNQRTLDPN SPRDFIDSFLIRMQEE EK
NPNTEFYLNLMSTLNLFIAGTETVSTTLRYGFLLLMKHPEVEAKVHEEIDRVIGKNRQPKFEDRAKMP
YMEAVIHEIQRF GDVIPMSLARRVKKDTKFRDFFLPKGTEVF PMLGSLVRDPSFFSNPQDFNPQHFLDDK
GQFKKSDAFV PFSIGKRYCFGEGLARMEFLFFTTVMQNFR LKSSQSPKIDIVSPKHVGFATIPRNYTMS
FLPR

TRTRPLEQKLISEEDLAANDILDYKDDDDKV

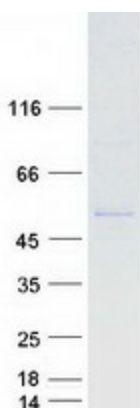
Tag:	C-Myc/DDK
Predicted MW:	56.2 kDa
Concentration:	>0.05 µg/µL as determined by microplate BCA method
Purity:	> 80% as determined by SDS-PAGE and Coomassie blue staining
Buffer:	25 mM Tris-HCl, 100 mM glycine, pH 7.3, 10% glycerol
Preparation:	Recombinant protein was captured through anti-DDK affinity column followed by conventional chromatography steps.
Note:	For testing in cell culture applications, please filter before use. Note that you may experience some loss of protein during the filtration process.
Storage:	Store at -80°C.



[View online »](#)

Stability:	Stable for 12 months from the date of receipt of the product under proper storage and handling conditions. Avoid repeated freeze-thaw cycles.
RefSeq:	NP_000755
Locus ID:	1549
UniProt ID:	P20853
RefSeq Size:	2281
Cytogenetics:	19q13.2
RefSeq ORF:	1482
Synonyms:	CPA7; CPAD; CYP2A; CYP11A7; P450-IIA4
Summary:	This gene encodes a member of the cytochrome P450 superfamily of enzymes. The cytochrome P450 proteins are monooxygenases which catalyze many reactions involved in drug metabolism and synthesis of cholesterol, steroids and other lipids. This protein localizes to the endoplasmic reticulum; its substrate has not yet been determined. This gene, which produces two transcript variants, is part of a large cluster of cytochrome P450 genes from the CYP2A, CYP2B and CYP2F subfamilies on chromosome 19q. [provided by RefSeq, Jul 2008]
Protein Families:	Druggable Genome, P450, Transmembrane
Protein Pathways:	Caffeine metabolism, Drug metabolism - cytochrome P450, Drug metabolism - other enzymes, Metabolic pathways, Retinol metabolism

Product images:



Coomassie blue staining of purified CYP2A7 protein (Cat# [TP313527]). The protein was produced from HEK293T cells transfected with CYP2A7 cDNA clone (Cat# [RC213527]) using MegaTran 2.0 (Cat# [TT210002]).