

## Product datasheet for **TP313522L**

### SH3GL3 (NM\_003027) Human Recombinant Protein

#### Product data:

Product Type:	Recombinant Proteins
Description:	Recombinant protein of human SH3-domain GRB2-like 3 (SH3GL3), transcript variant 1, 1 mg
Species:	Human
Expression Host:	HEK293T
Expression cDNA Clone or AA Sequence:	>RC213522 representing NM_003027 <b>Red</b> =Cloning site <b>Green</b> =Tags(s)

MSVAGLKKQFHKASQLFSEKISGAEGTKLDDEFDMERKIDVTNKVWAEILSKTTEYLQPNPAYRAKLGMLNTVSKIRGQVKTTGYPQTEGLLGDCMLKYGKELGEDSTFGNALIEVGESMKLMAEVKDSLDINVKQTFIDPLQLLQDKDLKEIGHHLKLEGRRLDYDYKKRVRGKIPDEEVRQAVEKFEESKELAERSMFNFLENDVEQVSQLAVFIEAALDYHRQSTEILQELQSKLQMRISAASSVPRREYKPRPVKRSSSELNGVSTTSVVKTTG  
SNIPMDQPCCRGLYDFEPENQGELGFKEGDIITLTNQIDENWYEGMIHGESGFFPINYVEVIVPLPQ

**TRTRPLEQKLISEEDLAANDILDYKDDDDKV**

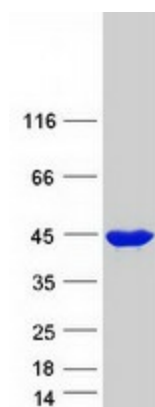
Tag:	C-Myc/DDK
Predicted MW:	39.1 kDa
Concentration:	>0.05 µg/µL as determined by microplate BCA method
Purity:	> 80% as determined by SDS-PAGE and Coomassie blue staining
Buffer:	25 mM Tris-HCl, 100 mM glycine, pH 7.3, 10% glycerol
Preparation:	Recombinant protein was captured through anti-DDK affinity column followed by conventional chromatography steps.
Note:	For testing in cell culture applications, please filter before use. Note that you may experience some loss of protein during the filtration process.
Storage:	Store at -80°C.
Stability:	Stable for 12 months from the date of receipt of the product under proper storage and handling conditions. Avoid repeated freeze-thaw cycles.
RefSeq:	<a href="#">NP_003018</a>
Locus ID:	6457



[View online »](#)

UniProt ID:	<a href="#">Q99963</a>
RefSeq Size:	2015
Cytogenetics:	15q25.2
RefSeq ORF:	1041
Synonyms:	CNSA3; EEN-B2; HsT19371; SH3D2C; SH3P13
Summary:	Implicated in endocytosis. May recruit other proteins to membranes with high curvature (By similarity).[UniProtKB/Swiss-Prot Function]
Protein Pathways:	Endocytosis

### Product images:



Coomassie blue staining of purified SH3GL3 protein (Cat# [TP313522]). The protein was produced from HEK293T cells transfected with SH3GL3 cDNA clone (Cat# [RC213522]) using MegaTran 2.0 (Cat# [TT210002]).