

## Product datasheet for **TP313518M**

### **COBRA1 (NELFB) (NM\_015456) Human Recombinant Protein**

#### Product data:

Product Type:	Recombinant Proteins
Description:	Recombinant protein of human cofactor of BRCA1 (COBRA1), 100 µg
Species:	Human
Expression Host:	HEK293T
Expression cDNA Clone or AA Sequence:	>RC213518 representing NM_015456 <b>Red</b> =Cloning site <b>Green</b> =Tags(s)

MFAGLQDLGVANGEDLKETLTNCTEPLKAIEQFQTENGVLLPSLQSAFLDLHGTPRLEFHQSVFDELKDKLLERSVAIASEGKAEERYKKLEDLLEKSFSLVKMPSLQPVVMCVMKHLPKVPEKKLKLVMADKELYRACAVEVKRQIWQDNQALFGDEVSPLLKQYILEKESALFSTELSVLHNFFSPSPKTRRQGEVVQRLTRMVGKNVKLYDMVLQFLRTLFLRTRNVHYCTLRAELLSLHDLVDVGEICTVDPCHKFTWCLDACIRERFVDSKRARELQGFLDGVKKGQEQVLGDLSMILCDPFAINTLALSTVRHLQELVGQETLPRDSPDLLLRLALGQGAWDMIDSQVFKEPKMEVELITRFLPMLMSFLVDDYTFNVDQKLPAAEKAPVSYNTLPESFTKFLQEQRMACEVGLYVVLHITKQRNKNALLRLLPGLVETFGDLAFGDIFLHLLTGNLALLADEFALEDFCSSLFDGFFLTASPRKENVHRHALRLLIHLHPRVAPSKLEALQKALEPTGQSGEAVKELYSQLGKLEQLDHRKPSPAQAAETPALELPLPSVPAPAPL

**TRTRPLEQKLISEEDLAANDILDYKDDDDKV**

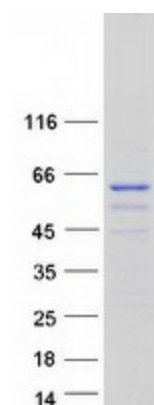
Tag:	C-Myc/DDK
Predicted MW:	65.5 kDa
Concentration:	>0.05 µg/µL as determined by microplate BCA method
Purity:	> 80% as determined by SDS-PAGE and Coomassie blue staining
Buffer:	25 mM Tris-HCl, 100 mM glycine, pH 7.3, 10% glycerol
Preparation:	Recombinant protein was captured through anti-DDK affinity column followed by conventional chromatography steps.
Note:	For testing in cell culture applications, please filter before use. Note that you may experience some loss of protein during the filtration process.
Storage:	Store at -80°C.



[View online »](#)

<b>Stability:</b>	Stable for 12 months from the date of receipt of the product under proper storage and handling conditions. Avoid repeated freeze-thaw cycles.
<b>RefSeq:</b>	<a href="#">NP_056271</a>
<b>Locus ID:</b>	25920
<b>UniProt ID:</b>	<a href="#">Q8WX92</a>
<b>RefSeq Size:</b>	2622
<b>Cytogenetics:</b>	9q34.3
<b>RefSeq ORF:</b>	1740
<b>Synonyms:</b>	COBRA1; NELF-B
<b>Summary:</b>	NELFB is a subunit of negative elongation factor (NELF), which also includes NELFA (WHSC2; MIM 606026), either NELFC or NELFD (TH1L; MIM 605297), and NELFE (RDBP; MIM 154040). NELF acts with DRB sensitivity-inducing factor (DSIF), a heterodimer of SPT4 (SUPT4H1; MIM 603555) and SPT5 (SUPT5H; MIM 602102), to cause transcriptional pausing of RNA polymerase II (see MIM 180660) (Narita et al., 2003 [PubMed 12612062]).[supplied by OMIM, Mar 2008]
<b>Protein Families:</b>	Transcription Factors

### Product images:



Coomassie blue staining of purified NELFB protein (Cat# [TP313518]). The protein was produced from HEK293T cells transfected with NELFB cDNA clone (Cat# [RC213518]) using MegaTran 2.0 (Cat# [TT210002]).