

## Product datasheet for TP313516L

### TBL1 (TBL1X) (NM\_005647) Human Recombinant Protein

#### Product data:

Product Type:	Recombinant Proteins
Description:	Recombinant protein of human transducin (beta)-like 1X-linked (TBL1X), transcript variant 1, 1 mg
Species:	Human
Expression Host:	HEK293T
Expression cDNA	>RC213516 representing NM_005647
Clone or AA Sequence:	Red=Cloning site Green=Tags(s)

MTELAGASSSCCHRPAGRGAMQSVLHHFQRLRGREGGSHFINTSSPRGEAKMSITSDEVNFLVYRYLQES  
GFSHSAFTFGIESHISQSNINGTLVPPAALISILQKGLQYVEAEISINEDGTVFDGRPIESLSLIDAVMP  
DVVQTRQQA FREKLAQQQASAAAAAATAAATAATTT SAGVSHQNP SKNREATVNGEENRAHSVNNHAK  
PMEIDGEVEIPSSKATVLRGHESEV FICAWN PVSDLLASGSGDSTARIWNLNENSNGGSTQLVLRHCIRE  
GGHDVPSNKDVTSLDWNTNGTLLATGSYDGFARIWTE DGNLASTLGQHKGP I FALKWNRKGN YILSAGVD  
KTTIIWDAHTGEAKQ QFPFHSAPALD VDWQNNTTFASCSTDMCIHV CRLGCDR PVKTFQGH TNEVNAIKW  
DPSGMLLASCSDDMTLKIWSMKQEVCIHDLQAHNKEIYTIKWSPTGPATSNPNSNIMLASAFDSTVRLW  
DIERGVCHTHTLTKHQEPVYSVAFSPDGKYLASGSF D KCVHIWNTQSGNLVHSYRGTGGIFEV CWNARGDK  
VGASASDGSVCVLDLRK

TRTRPLEQKLISEEDLAANDILDYKDDDDKV

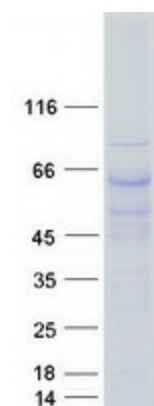
Tag:	C-Myc/DDK
Predicted MW:	62.3 kDa
Concentration:	>0.05 µg/µL as determined by microplate BCA method
Purity:	> 80% as determined by SDS-PAGE and Coomassie blue staining
Buffer:	25 mM Tris-HCl, 100 mM glycine, pH 7.3, 10% glycerol
Preparation:	Recombinant protein was captured through anti-DDK affinity column followed by conventional chromatography steps.
Note:	For testing in cell culture applications, please filter before use. Note that you may experience some loss of protein during the filtration process.
Storage:	Store at -80°C.



[View online »](#)

<b>Stability:</b>	Stable for 12 months from the date of receipt of the product under proper storage and handling conditions. Avoid repeated freeze-thaw cycles.
<b>RefSeq:</b>	<a href="#">NP_005638</a>
<b>Locus ID:</b>	6907
<b>UniProt ID:</b>	<a href="#">O60907</a> , <a href="#">A0A024RBV9</a>
<b>RefSeq Size:</b>	5886
<b>Cytogenetics:</b>	Xp22.31-p22.2
<b>RefSeq ORF:</b>	1731
<b>Synonyms:</b>	CHNG8; EBI; SMAP55; TBL1
<b>Summary:</b>	The protein encoded by this gene has sequence similarity with members of the WD40 repeat-containing protein family. The WD40 group is a large family of proteins, which appear to have a regulatory function. It is believed that the WD40 repeats mediate protein-protein interactions and members of the family are involved in signal transduction, RNA processing, gene regulation, vesicular trafficking, cytoskeletal assembly and may play a role in the control of cytotypic differentiation. This encoded protein is found as a subunit in corepressor SMRT (silencing mediator for retinoid and thyroid receptors) complex along with histone deacetylase 3 protein. This gene is located adjacent to the ocular albinism gene and it is thought to be involved in the pathogenesis of the ocular albinism with late-onset sensorineural deafness phenotype. Four transcript variants encoding two different isoforms have been found for this gene. This gene is highly similar to the Y chromosome TBL1Y gene. [provided by RefSeq, Nov 2008]
<b>Protein Families:</b>	Transcription Factors
<b>Protein Pathways:</b>	Wnt signaling pathway

### Product images:



Coomassie blue staining of purified TBL1X protein (Cat# [TP313516]). The protein was produced from HEK293T cells transfected with TBL1X cDNA clone (Cat# [RC213516]) using MegaTran 2.0 (Cat# [TT210002]).