

Product datasheet for **TP313444L**

Gemin 8 (GEMIN8) (NM_017856) Human Recombinant Protein

Product data:

Product Type:	Recombinant Proteins
Description:	Recombinant protein of human gem (nuclear organelle) associated protein 8 (GEMIN8), transcript variant 3, 1 mg
Species:	Human
Expression Host:	HEK293T
Expression cDNA Clone or AA Sequence:	>RC213444 protein sequence Red =Cloning site Green =Tags(s) MAAVKASTSKATRPWYSHPVYARYWQHYPYQAMAWMQSHHNAYRKAVESCFNLPWYLPSALLPQSSYDNEA AYPQSFYDHHVAWQDYPCSSSHFRRSGQHPRYSSRIQASTKEDQALSKEEEMETESDAEVECDLSNMEIT EELRQYFAETERHREERRRQQQLDAERLDSYVNADHDLYCNTRRSVEAPTERPGERRQAEMKRLYGDSAA KIQAMEAAVQLSFDKHKCDRKQPKYWPVIPLKF TRTRPLEQKLISEEDLAANDILDYKDDDDKV
Tag:	C-Myc/DDK
Predicted MW:	28.5 kDa
Concentration:	>0.05 µg/µL as determined by microplate BCA method
Purity:	> 80% as determined by SDS-PAGE and Coomassie blue staining
Buffer:	25 mM Tris-HCl, 100 mM glycine, pH 7.3, 10% glycerol
Preparation:	Recombinant protein was captured through anti-DDK affinity column followed by conventional chromatography steps.
Note:	For testing in cell culture applications, please filter before use. Note that you may experience some loss of protein during the filtration process.
Storage:	Store at -80°C.
Stability:	Stable for 12 months from the date of receipt of the product under proper storage and handling conditions. Avoid repeated freeze-thaw cycles.
RefSeq:	NP_060326
Locus ID:	54960



[View online »](#)

UniProt ID: [Q9NWZ8](#), [A0A024RBX2](#)

RefSeq Size: 3259

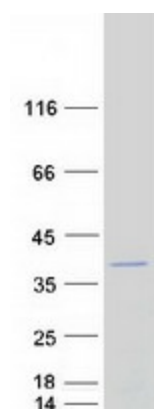
Cytogenetics: Xp22.2

RefSeq ORF: 726

Synonyms: FAM51A1

Summary: The protein encoded by this gene is part of the SMN complex, which is necessary for spliceosomal snRNP assembly in the cytoplasm and pre-mRNA splicing in the nucleus. The encoded protein binds to both SMN1 and the GEMIN6/GEMIN7 heterodimer, mediating their interaction. This protein is found in nuclear Gemini of Cajal bodies (gems) and in the cytoplasm. Three transcript variants encoding the same protein have been found for this gene. [provided by RefSeq, May 2010]

Product images:



Coomassie blue staining of purified GEMIN8 protein (Cat# [TP313444]). The protein was produced from HEK293T cells transfected with GEMIN8 cDNA clone (Cat# [RC213444]) using MegaTran 2.0 (Cat# [TT210002]).