

## Product datasheet for TP313430L

### CLUAP1 (NM\_024793) Human Recombinant Protein

#### Product data:

Product Type:	Recombinant Proteins
Description:	Recombinant protein of human clusterin associated protein 1 (CLUAP1), transcript variant 2, 1 mg
Species:	Human
Expression Host:	HEK293T
Expression cDNA Clone or AA Sequence:	>RC213430 protein sequence Red=Cloning site Green=Tags(s)

MSFRDLRNFTEMMRALGYPRHISMENFRTPNFGLVSEVLLWLVKRYEPQTDIPPDVDTEQDRVFFIKAIA  
QFMATKAHIKLNKLYQADGYAVKELLKITSVLYNAMKTKGMEGSEIVEEDVNFKFDLGSKIADLCAA  
RQLASEITSGASLYDLLGMEVELREMRTEAIARPLEINETEKVMRIAIKEILTQVQKTKDLLNNVASDE  
ANLEAKIEKRKLELERNRKRLETLQSVRPCFMDEYEKTEEELQKQYDYLEKFQNLTYLEQQLEDHHRME  
QERFEEAKNTLCLIQNKLEEEKRLKSGSNDDSDIDIQEDDESSELEERRLPKPQTAMEMLMQGRP GK  
RIVGTMQGGSDDDNEDSESEIDMEDDDDEDDDEDESISLSPTKPNRRVWKSEPLDESNDNF

TRTRPLEQKLISEEDLAANDILDYKDDDDKV

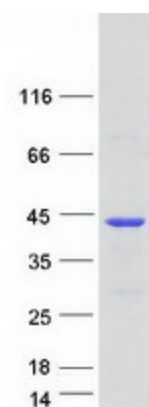
Tag:	C-Myc/DDK
Predicted MW:	28.9 kDa
Concentration:	>0.05 µg/µL as determined by microplate BCA method
Purity:	> 80% as determined by SDS-PAGE and Coomassie blue staining
Buffer:	25 mM Tris-HCl, 100 mM glycine, pH 7.3, 10% glycerol
Preparation:	Recombinant protein was captured through anti-DDK affinity column followed by conventional chromatography steps.
Note:	For testing in cell culture applications, please filter before use. Note that you may experience some loss of protein during the filtration process.
Storage:	Store at -80°C.
Stability:	Stable for 12 months from the date of receipt of the product under proper storage and handling conditions. Avoid repeated freeze-thaw cycles.
RefSeq:	<u><a href="#">NP_079069</a></u>



[View online »](#)

Locus ID:	23059
UniProt ID:	<a href="#">Q96A11</a>
RefSeq Size:	3616
Cytogenetics:	16p13.3
RefSeq ORF:	1242
Synonyms:	CFAP22; FAP22; IFT38
Summary:	The protein encoded by this gene contains a single coiled-coil region. Alternative splicing results in multiple transcript variants and protein isoforms. [provided by RefSeq, Jul 2012]

### Product images:



Coomassie blue staining of purified CLUAP1 protein (Cat# [TP313430]). The protein was produced from HEK293T cells transfected with CLUAP1 cDNA clone (Cat# [RC213430]) using MegaTran 2.0 (Cat# [TT210002]).