

Product datasheet for TP313418

DTX2 (NM_001102595) Human Recombinant Protein

Product data:

Product Type:	Recombinant Proteins
Description:	Purified recombinant protein of Homo sapiens deltex homolog 2 (Drosophila) (DTX2), transcript variant 3, 20 µg
Species:	Human
Expression Host:	HEK293T
Expression cDNA Clone or AA Sequence:	>RC213418 protein sequence Red =Cloning site Green =Tags(s)

MAMAPSPSLVQVYTSPA AVAVWEWQDGLGTWHPYSATVCSFIEQQFVQQKGQRFLGSLAHSIPLGQADP
SLAPYIIDLPSWTQFRQDTGTMRAVRRHLFPQHSAPGRGVVWEWLSDDGSWTAYEASVCDYLEQQVARGN
QLVDLAPLGYNYTVNYTHTQTNKTSSFCRSVRRQAGPPYPVTIIAPPGHTGVACSCHQCLSGSRTGPV
SGRYRHSMTNLPAYPVPQHPPHRTASVFGTHQAFAPYKPSLSGARSAPRLNNTTNAWGAAPPSLGSQPLY
RSSLSHLGPQHLPPGSSTSGAVSASLPSGPSSSPGVPATVPMQMPKPSRVQQALAGMTSVLMSAIGLPV
CLSRAPQPTSPPASRLASKSHGSKRLRKM SVKEATPKPEPEPEQVIKNYTEELKVPDDEDICMEKLS
TASGYSDVTD SKAIGSLAVGHLTKCSHAFHLLCLLAM YCNGNKDGS LQCPSCKTIYGEKTGTQPQGMKMEV
LRFQMSLPGHEDCGTILIVYSIPHGIQGPEHPNPGKPF TARGFPRQCYLPD NAQGRK VLELLKVAWKRRLL
IFTVGTSTTGETDTVWVNEIHHKTEMDRNITGHGYPDPNYLQNVLAELAAQGVTEDCLEQQ

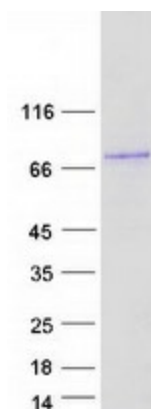
TRTRPLEQKLISEEDLAANDILDYKDDDDKV

Tag:	C-Myc/DDK
Predicted MW:	67.1 kDa
Concentration:	>0.05 µg/µL as determined by microplate BCA method
Purity:	> 80% as determined by SDS-PAGE and Coomassie blue staining
Buffer:	25 mM Tris-HCl, 100 mM glycine, pH 7.3, 10% glycerol
Preparation:	Recombinant protein was captured through anti-DDK affinity column followed by conventional chromatography steps.
Note:	For testing in cell culture applications, please filter before use. Note that you may experience some loss of protein during the filtration process.
Storage:	Store at -80°C.



[View online »](#)

Stability:	Stable for 12 months from the date of receipt of the product under proper storage and handling conditions. Avoid repeated freeze-thaw cycles.
RefSeq:	NP_001096065
Locus ID:	113878
UniProt ID:	Q86UW9
RefSeq Size:	2550
Cytogenetics:	7q11.23
RefSeq ORF:	1866
Synonyms:	RNF58
Summary:	DTX2 functions as an E3 ubiquitin ligase (Takeyama et al., 2003 [PubMed 12670957]).[supplied by OMIM, Nov 2009]
Protein Families:	Druggable Genome
Protein Pathways:	Notch signaling pathway

Product images:

Coomassie blue staining of purified DTX2 protein (Cat# TP313418). The protein was produced from HEK293T cells transfected with DTX2 cDNA clone (Cat# [RC213418]) using MegaTran 2.0 (Cat# [TT210002]).