

Product datasheet for **TP313412L**

Filensin (BFSP1) (NM_001195) Human Recombinant Protein

Product data:

Product Type:	Recombinant Proteins
Description:	Recombinant protein of human beaded filament structural protein 1, filensin (BFSP1), 1 mg
Species:	Human
Expression Host:	HEK293T
Expression cDNA Clone or AA Sequence:	>RC213412 representing NM_001195 Red=Cloning site Green=Tags(s)

MYRRSYVFQTRKEQYEHAEASRAAEPPERPADEGWAGATSLAALQGLGERVAHVQRARALEQRHAGLRR
QLDAFQRLGELAGPEDALARQVESNRQRVRDLEAERARLERQGTEAQRALDEFRSKYENECQCQLLLKEM
LERLNKEADEALLHNLRLQLEAQFLQDDISAAKDRHKKNLLEVQTYISILQQIIHTTTPPASIVTSGMREE
KLLTEREVAALRSQLEEGREVLSHLQAQRVELQAQTTTLEQAIKSAHECYDDEIQLYNEQIETLRKEIEE
TERVLEKSSYDCRQLAVAQQTTLKNELDRYHRIIEIEGNRLTSAFIETPIPLFTQSHGVSLSTGSGGKDLT
RALQDITAAKPRQKALPKNVPRRKEIITKDKTNGALEDAPLKGLEDTKLVQVWLKEESESKEFESESKEVS
PLTQEGAPEDVPDGGQISKGFGLYRKVKEKVRSPKEPETELYTKERHVLVTGDANYVDPRFVSSIT
AKGGVAVSVAEDSVLYDGGQVEPSPKPLENGQVGLQEKEDGQPIDQQPIDKEIEPDGAELEGPEEKR
EGEERDEESRRPCAMVTPGAEEPSIPEPPKPAADQDGAEVLGTRSRSLPEKGGPKALAYKTVEVVESIEK
ISTESIQTYEETAVIVETMIGKTKSDKKKSGEKSS

TRTRPLEQKLISEEDLAANDILDYKDDDDKV

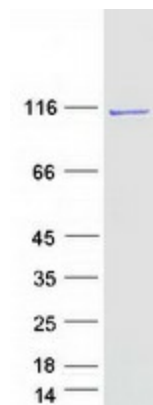
Tag:	C-Myc/DDK
Predicted MW:	74.4 kDa
Concentration:	>0.05 µg/µL as determined by microplate BCA method
Purity:	> 80% as determined by SDS-PAGE and Coomassie blue staining
Buffer:	25 mM Tris-HCl, 100 mM glycine, pH 7.3, 10% glycerol
Preparation:	Recombinant protein was captured through anti-DDK affinity column followed by conventional chromatography steps.
Note:	For testing in cell culture applications, please filter before use. Note that you may experience some loss of protein during the filtration process.
Storage:	Store at -80°C.



[View online >](#)

Stability:	Stable for 12 months from the date of receipt of the product under proper storage and handling conditions. Avoid repeated freeze-thaw cycles.
RefSeq:	NP_001186
Locus ID:	631
UniProt ID:	Q12934
RefSeq Size:	2176
Cytogenetics:	20p12.1
RefSeq ORF:	1995
Synonyms:	CP94; CP115; CTRCT33; LIFL-H
Summary:	This gene encodes a lens-specific intermediate filament-like protein named filensin. The encoded protein is expressed in lens fiber cells after differentiation has begun. This protein functions as a component of the beaded filament which is a cytoskeletal structure found in lens fiber cells. Mutations in this gene are the cause of autosomal recessive cortical juvenile-onset cataract. Alternate splicing results in multiple transcript variants. [provided by RefSeq, Jul 2013]

Product images:



Coomassie blue staining of purified BFSP1 protein (Cat# [TP313412]). The protein was produced from HEK293T cells transfected with BFSP1 cDNA clone (Cat# [RC213412]) using MegaTran 2.0 (Cat# [TT210002]).