

Product datasheet for TP313409

CTSA (NM_000308) Human Recombinant Protein

Product data:

Product Type:	Recombinant Proteins
Description:	Recombinant protein of human cathepsin A (CTSA), transcript variant 1, 20 µg
Species:	Human
Expression Host:	HEK293T
Expression cDNA	>RC213409 representing NM_000308
Clone or AA Sequence:	Red=Cloning site Green=Tags(s)

MTSSPRAPPGEQGRGGAEMIRAAPPPLLLLLLLLLVSWASRGEAAPDQDEIQLRPLGLAKQPSFRQYSGY
LKGSGSKHLHYWFVESQKDPENSPVWLWLNNGGPGCSSLDGLLTEHGPFLVQPDGVTLEYNPYSWNLIANV
LYLESPAGVGFYSDDKFYATNDTEVAQSNFEALQDFRFLPEYKNNKLF LTGESYAGIYIPTLAVLVMQ
DPSMNLQGLAVGNGLSSYEQNDNSLVYFAYYHGLLGNRLWSSLQTHCCSQNKCNFYDNKDLECVTNLQEV
ARIVGNSGLNIYNLYAPCAGGVPSHFRIYEDT VVVQDLGNIFTRLPLKRMWHQALLRSGDKVRMDPPCTN
TTAASYLNNPYVRKALNIPEQLPQWDMCNFLVNLQYRRLYRSMNSQYLKLLSSQKYQILLYNGD VDMAC
NFMGDEWVFDLSLQKMEVQRRPWLVKYGDSGEQIAGFVKEFSHIAFLT IKGAGHMVPTDKPLAAFTMF SR
FLNKQPY

TRTRPLEQKLISEEDLAANDILDYKDDDDKV

Tag:	C-Myc/DDK
Predicted MW:	51.4 kDa
Concentration:	>0.05 µg/µL as determined by microplate BCA method
Purity:	> 80% as determined by SDS-PAGE and Coomassie blue staining
Buffer:	25 mM Tris-HCl, 100 mM glycine, pH 7.3, 10% glycerol
Preparation:	Recombinant protein was captured through anti-DDK affinity column followed by conventional chromatography steps.
Note:	For testing in cell culture applications, please filter before use. Note that you may experience some loss of protein during the filtration process.
Storage:	Store at -80°C.
Stability:	Stable for 12 months from the date of receipt of the product under proper storage and handling conditions. Avoid repeated freeze-thaw cycles.



[View online »](#)

RefSeq: [NP_000299](#)

Locus ID: 5476

UniProt ID: [P10619](#), [X6R8A1](#)

RefSeq Size: 2254

Cytogenetics: 20q13.12

RefSeq ORF: 1491

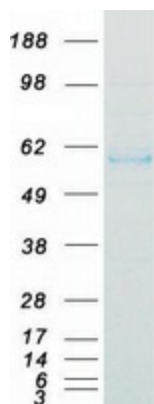
Synonyms: GLB2; GSL; NGBE; PPCA; PPGB

Summary: This gene encodes a member of the peptidase S10 family of serine carboxypeptidases. Alternative splicing results in multiple transcript variants, at least one of which encodes a preproprotein that is proteolytically processed to generate two chains that comprise the heterodimeric active enzyme. This enzyme possesses deamidase, esterase and carboxypeptidase activities and acts as a scaffold in the lysosomal multienzyme complex. Mutations in this gene are associated with galactosialidosis. [provided by RefSeq, Nov 2015]

Protein Families: Druggable Genome, Protease

Protein Pathways: Renin-angiotensin system

Product images:



Coomassie blue staining of purified CTSA protein (Cat# TP313409). The protein was produced from HEK293T cells transfected with CTSA cDNA clone (Cat# [RC213409]) using MegaTran 2.0 (Cat# [TT210002]).