

## Product datasheet for **TP313389**

### ACVRL1 (NM\_001077401) Human Recombinant Protein

#### Product data:

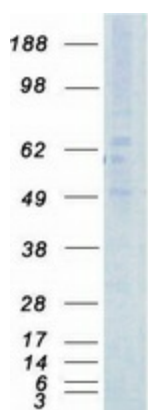
Product Type:	Recombinant Proteins
Description:	Recombinant protein of human activin A receptor type II-like 1 (ACVRL1), transcript variant 2, 20 µg
Species:	Human
Expression Host:	HEK293T
Expression cDNA Clone or AA Sequence:	>RC213389 protein sequence <b>Red</b> =Cloning site <b>Green</b> =Tags(s)
	<p>MTLGSPRKGLLMLLMALVTQGDPVKPSRGPLVTCTCESPHCKGPTCRGAWCTWVLVREEGRHPQEHRGCG  NLHRELCRGRPTEFVNHYCCDSHLCNHNVSLEATQPPSEQPGTDGQLALILGPVLALLALVALGVLGL  WHVRRRQEKQRGLHSELGESSLILKASEQGDSMLGDLSDCTTGSGSGLPFLVQRTVARQVALVECVGK  GRYGEVWRGLWHGESVAVKIFSSRDEQSWFRETEIYNTVLLRHDNILGFIASDMTSRNSSTQLWLITHYH  EHGSLYDFLQRQTLEPHLALRLAVSAACGLAHLHVEIFGTQGKPAIAHRDFKSRNVLVKSNLQCCIALDG  LAVMHSQGS DYLDIGNNPRVGTKRYMAPEVLDEQIRTD CFESYKWTDIWAFGLVLWEIARRTIVNGIVED  YRPPFYDVPNDPSFEDMKKVVCVDQQTPTIPNRLAADPVL SGLAQMMREC WYPNP SARLTALRIKKT LQ  KISNSPEKPKVIQ</p> <p><b>TRTRPLEQKLISEEDLAANDILDYKDDDDKV</b></p>
Tag:	C-Myc/DDK
Predicted MW:	55.9 kDa
Concentration:	>0.05 µg/µL as determined by microplate BCA method
Purity:	> 80% as determined by SDS-PAGE and Coomassie blue staining
Buffer:	25 mM Tris-HCl, 100 mM glycine, pH 7.3, 10% glycerol
Preparation:	Recombinant protein was captured through anti-DDK affinity column followed by conventional chromatography steps.
Note:	For testing in cell culture applications, please filter before use. Note that you may experience some loss of protein during the filtration process.
Storage:	Store at -80°C.



[View online »](#)

<b>Stability:</b>	Stable for 12 months from the date of receipt of the product under proper storage and handling conditions. Avoid repeated freeze-thaw cycles.
<b>RefSeq:</b>	<a href="#">NP_001070869</a>
<b>Locus ID:</b>	94
<b>UniProt ID:</b>	<a href="#">P37023</a> , <a href="#">A0A0S2Z310</a>
<b>RefSeq Size:</b>	4126
<b>Cytogenetics:</b>	12q13.13
<b>RefSeq ORF:</b>	1509
<b>Synonyms:</b>	ACVRLK1; ALK-1; ALK1; HHT; HHT2; ORW2; SKR3; TSR-I
<b>Summary:</b>	This gene encodes a type I cell-surface receptor for the TGF-beta superfamily of ligands. It shares with other type I receptors a high degree of similarity in serine-threonine kinase subdomains, a glycine- and serine-rich region (called the GS domain) preceding the kinase domain, and a short C-terminal tail. The encoded protein, sometimes termed ALK1, shares similar domain structures with other closely related ALK or activin receptor-like kinase proteins that form a subfamily of receptor serine/threonine kinases. Mutations in this gene are associated with hemorrhagic telangiectasia type 2, also known as Rendu-Osler-Weber syndrome 2. [provided by RefSeq, Jul 2008]
<b>Protein Families:</b>	Druggable Genome, Protein Kinase, Transmembrane
<b>Protein Pathways:</b>	Cytokine-cytokine receptor interaction, TGF-beta signaling pathway

### Product images:



Coomassie blue staining of purified ACVRL1 protein (Cat# TP313389). The protein was produced from HEK293T cells transfected with ACVRL1 cDNA clone (Cat# [RC213389]) using MegaTran 2.0 (Cat# [TT210002]).