

## Product datasheet for **TP313353M**

### VCAM1 (NM\_080682) Human Recombinant Protein

#### Product data:

Product Type:	Recombinant Proteins
Description:	Recombinant protein of human vascular cell adhesion molecule 1 (VCAM1), transcript variant 2, 100 µg
Species:	Human
Expression Host:	HEK293T
Expression cDNA Clone or AA Sequence:	>RC213353 representing NM_080682 Red=Cloning site Green=Tags(s)

MPGKMWVILGASNILWIMFAASQAFKIETTPESRYLAQIGDSVSLTCSTTGCEPFFSWRTQIDSPLNGK  
VTNEGTTSTLTMNPVSGNEHSYLCTATCESRKLEKGIQVEIYSPKDPPEIHLGSPLEAGKPITVKCSVA  
DVYPFDRLEIDLLKGDHLMKSQEFLEDADRKSLETKSLEVTFTPIEDIGKVLVCRAKLHIDEMDSVPTV  
RQAVKELQVYISPKNTVISVNPSTKLQEGGSVTMTCSSEGLPAPEIFWSKKLDNGLQHLSGNATLTLIA  
MRMEDSGIYVCEGVNLIGKNRKEVELIVQAFPRDPEIEMSGGLVNGSSVTVSCVKVPSVYPLDRLEIELLK  
GETILENIEFLEDTDMKSLENKSLEMTFIPTIEDTGKALVCQAKLHIDDMEFEPKQRQSTQTLVNVVAPR  
DTTVLVSPSSILEEGSSVNMTCLSQGFAPKILWSRQLPNGELQPLSENATLTLISTKMEDSGVYLCEGI  
NQAGRSRKEVELIIQVTPKDIKLTAFPSSEVKEGDTVIISCTCGNVPETWIIKKKAETGDTVLKSIDGA  
YTIRKAQLKDAGVYECESKNKVGSQLRSLTLDVQGRENNKDYFPELLVLYFASSLIIPAIGMIIFARK  
ANMKGSYSLVEAQSKV

TRTRPLEQKLISEEDLAANDILDYKDDDDKV

Tag:	C-Myc/DDK
Predicted MW:	68.7 kDa
Concentration:	>0.05 µg/µL as determined by microplate BCA method
Purity:	> 80% as determined by SDS-PAGE and Coomassie blue staining
Buffer:	25 mM Tris-HCl, 100 mM glycine, pH 7.3, 10% glycerol
Preparation:	Recombinant protein was captured through anti-DDK affinity column followed by conventional chromatography steps.
Note:	For testing in cell culture applications, please filter before use. Note that you may experience some loss of protein during the filtration process.
Storage:	Store at -80°C.



[View online »](#)

**Stability:** Stable for 12 months from the date of receipt of the product under proper storage and handling conditions. Avoid repeated freeze-thaw cycles.

**RefSeq:** [NP\\_542413](#)

**Locus ID:** 7412

**UniProt ID:** [P19320](#)

**RefSeq Size:** 2944

**Cytogenetics:** 1p21.2

**RefSeq ORF:** 1941

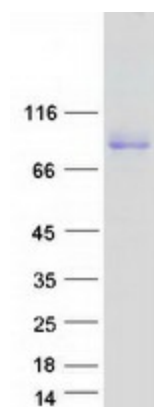
**Synonyms:** CD106; INCAM-100

**Summary:** This gene is a member of the Ig superfamily and encodes a cell surface sialoglycoprotein expressed by cytokine-activated endothelium. This type I membrane protein mediates leukocyte-endothelial cell adhesion and signal transduction, and may play a role in the development of atherosclerosis and rheumatoid arthritis. Three alternatively spliced transcripts encoding different isoforms have been described for this gene. [provided by RefSeq, Dec 2010]

**Protein Families:** Druggable Genome, ES Cell Differentiation/IPS, Transmembrane

**Protein Pathways:** Cell adhesion molecules (CAMs), Leukocyte transendothelial migration

### Product images:



Coomassie blue staining of purified VCAM1 protein (Cat# [TP313353]). The protein was produced from HEK293T cells transfected with VCAM1 cDNA clone (Cat# [RC213353]) using MegaTran 2.0 (Cat# [TT210002]).