

## Product datasheet for **TP313338L**

### **GATD1 (NM\_182612) Human Recombinant Protein**

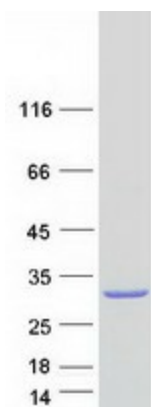
#### Product data:

Product Type:	Recombinant Proteins
Description:	Recombinant protein of human Parkinson disease 7 domain containing 1 (PDDC1), 1 mg
Species:	Human
Expression Host:	HEK293T
Expression cDNA Clone or AA Sequence:	>RC213338 representing NM_182612 <b>Red</b> =Cloning site <b>Green</b> =Tags(s)  MASERLPNRPACLLVASGAAEGVSAQSFLLHCFTMASTAFNLQVATPGGKAMEFVDVTSNARWVQDFRLK AYASPAKLESIDGARYHALLIPSCPGALTDLASSGSLARILQHFHSESKPICAUGHGVAALCCATNEDRS WVFDSYSLTGPSVCELVRAPGFARLPLVVEDEVKDSGACFSASEPDAVHVLDRLHVTGQNASSTVPAVQ NLLFLCGSRK  <b>TRTRPLEQKLISEEDLAANDILDYKDDDDKV</b>
Tag:	C-Myc/DDK
Predicted MW:	23.1 kDa
Concentration:	>0.05 µg/µL as determined by microplate BCA method
Purity:	> 80% as determined by SDS-PAGE and Coomassie blue staining
Buffer:	25 mM Tris-HCl, 100 mM glycine, pH 7.3, 10% glycerol
Preparation:	Recombinant protein was captured through anti-DDK affinity column followed by conventional chromatography steps.
Note:	For testing in cell culture applications, please filter before use. Note that you may experience some loss of protein during the filtration process.
Storage:	Store at -80°C.
Stability:	Stable for 12 months from the date of receipt of the product under proper storage and handling conditions. Avoid repeated freeze-thaw cycles.
RefSeq:	<a href="#">NP_872418</a>
Locus ID:	347862
UniProt ID:	<a href="#">Q8NB37</a> , <a href="#">B7Z1J9</a>



[View online »](#)

RefSeq Size:	2598
Cytogenetics:	11p15.5
RefSeq ORF:	660
Synonyms:	PDDC1
Protein Families:	Protease

**Product images:**

Coomassie blue staining of purified GATD1 protein (Cat# [TP313338]). The protein was produced from HEK293T cells transfected with GATD1 cDNA clone (Cat# [RC213338]) using MegaTran 2.0 (Cat# [TT210002]).