

Product datasheet for TP313321M

CD168 (HMMR) (NM_012484) Human Recombinant Protein

Product data:

Product Type:	Recombinant Proteins
Description:	Recombinant protein of human hyaluronan-mediated motility receptor (RHAMM) (HMMR), transcript variant 2, 100 µg
Species:	Human
Expression Host:	HEK293T
Expression cDNA Clone or AA Sequence:	>RC213321 representing NM_012484 Red=Cloning site Green=Tags(s)

MSFPKAPLKRFDPSGAPSPGAYDVKTLEVLKGPVSFQKSQRFKQQKESKQNLNVDKDTTLPASARKVK
SSESKESQKNDKDLKILEKEIRVLLQERGAQDRRIQDLETELEKMEARLNAALREKTSLSANNATLEKQL
IELTRTNELLKSKFSENGNQKNLRILSLELMKLRNKRETKMRGMMAKQEGMEMKLQVTQRSLEESQGKIA
QLEGKLVSIEKEKIDKSETEKLLYIEEISCASDQVEKYKLDIAQLEENLKEKNDEILSLKQSLEENIV
ILSKQVEDLNVKQCQLLEKEKEDHVNRRNREHNENLNAEMQNLKQKFILEQQEREKLLQKELQIDSLQEQEK
ELSSSLHQKLCFSQEEMVKEKNLFEEELKQTLDELQKQKEEQAEERLVKQLEEEAKSRAEELKLEEKL
KGKEAELEKSSAHTQATLLLQEKYDSMVQSLEDVTAQFESYKALTASEIEDLKLNSLQEKAAKAGKN
AEDVQHQILATESSNQEYVRMLLDLQTKSALKETEIKEITVSFLQKITDLQNQLKQEEEDFRKQLEDEEG
RKAEKENTTAELTEEINKWRLLYEELYNKTKPFQLQLDAFEVEKQALLNEHGAAQEQLNKIRDSYAKLLG
HQNLKQKIKHVVKLDENSQLKSEVSKLRCQLAKKKQSETKLEELNKVLGIKHFDPKAFHHESKENFA
LKTPLKEGNTNCYRAPMECQESWK

TRTRPLEQKLISEEDLAANDILDYKDDDDKV

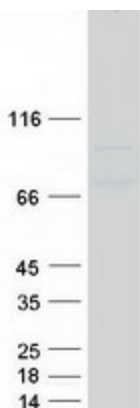
Tag:	C-Myc/DDK
Predicted MW:	83.9 kDa
Concentration:	>0.05 µg/µL as determined by microplate BCA method
Purity:	> 80% as determined by SDS-PAGE and Coomassie blue staining
Buffer:	25 mM Tris-HCl, 100 mM glycine, pH 7.3, 10% glycerol
Preparation:	Recombinant protein was captured through anti-DDK affinity column followed by conventional chromatography steps.
Note:	For testing in cell culture applications, please filter before use. Note that you may experience some loss of protein during the filtration process.



[View online »](#)

Storage:	Store at -80°C.
Stability:	Stable for 12 months from the date of receipt of the product under proper storage and handling conditions. Avoid repeated freeze-thaw cycles.
RefSeq:	NP_036616
Locus ID:	3161
UniProt ID:	O75330
RefSeq Size:	3002
Cytogenetics:	5q34
RefSeq ORF:	2172
Synonyms:	CD168; IHABP; RHAMM
Summary:	The protein encoded by this gene is involved in cell motility. It is expressed in breast tissue and together with other proteins, it forms a complex with BRCA1 and BRCA2, thus is potentially associated with higher risk of breast cancer. Alternatively spliced transcript variants encoding different isoforms have been noted for this gene. [provided by RefSeq, Dec 2008]
Protein Families:	Druggable Genome, Stem cell - Pluripotency
Protein Pathways:	ECM-receptor interaction

Product images:



Coomassie blue staining of purified HMMR protein (Cat# [TP313321]). The protein was produced from HEK293T cells transfected with HMMR cDNA clone (Cat# [RC213321]) using MegaTran 2.0 (Cat# [TT210002]).