

Product datasheet for **TP313318L**

NY-ESO-1 (CTAG1B) (NM_001327) Human Recombinant Protein

Product data:

Product Type:	Recombinant Proteins
Description:	Recombinant protein of human cancer/testis antigen 1B (CTAG1B/NY-ESO-1), 1 mg
Species:	Human
Expression Host:	HEK293T
Expression cDNA Clone or AA Sequence:	>RC213318 representing NM_001327 Red =Cloning site Green =Tags(s) MQAEGRGTGGSTGDADGPGGPGIPDGPGGNAGGPGGAGATGGRGPRGAGAARASGPGGGAPRGPHGGAAS GLNGCCRCGARGPESRLLFYLAMPFATPMEALARRSLAQDAPPLPVPGVLLKEFTVSGNILTIRLTAA DHRQLQLSISSCLQLSLLMWITQCFLPVFLAQPPSGQRR TRTRPLEQKLISEEDLAANDILDYKDDDDKV
Tag:	C-Myc/DDK
Predicted MW:	17.8 kDa
Concentration:	>0.1 µg/µL as determined by microplate BCA method
Purity:	> 80% as determined by SDS-PAGE and Coomassie blue staining
Buffer:	25 mM Tris-HCl, 100 mM glycine, pH 7.3, 10% glycerol
Bioactivity:	ELISA capture for autoantibodies (PMID: 27323861) ELISA capture for autoantibodies (PMID: 27793776)
Preparation:	Recombinant protein was captured through anti-DDK affinity column followed by conventional chromatography steps.
Note:	For testing in cell culture applications, please filter before use. Note that you may experience some loss of protein during the filtration process.
Storage:	Store at -80°C.
Stability:	Stable for 12 months from the date of receipt of the product under proper storage and handling conditions. Avoid repeated freeze-thaw cycles.
RefSeq:	NP_001318
Locus ID:	1485



[View online »](#)

UniProt ID: [P78358](#)

RefSeq Size: 806

Cytogenetics: Xq28

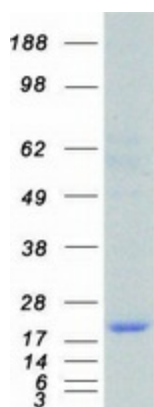
RefSeq ORF: 540

Synonyms: CT6.1; CTAG; CTAG1; ESO1; LAGE-2; LAGE2B; NY-ESO-1

Summary: The protein encoded by this gene is an antigen that is overexpressed in many cancers but that is also expressed in normal testis. This gene is found in a duplicated region of the X-chromosome and therefore has a neighboring gene of identical sequence. [provided by RefSeq, Jan 2012]

Protein Families: Druggable Genome

Product images:



Coomassie blue staining of purified CTAG1B protein (Cat# [TP313318]). The protein was produced from HEK293T cells transfected with CTAG1B cDNA clone (Cat# [RC213318]) using MegaTran 2.0 (Cat# [TT210002]).