

Product datasheet for TP313279

LHPP (NM_022126) Human Recombinant Protein

Product data:

Product Type:	Recombinant Proteins
Description:	Recombinant protein of human phospholysine phosphohistidine inorganic pyrophosphate phosphatase (LHPP), 20 µg
Species:	Human
Expression Host:	HEK293T
Expression cDNA Clone or AA Sequence:	>RC213279 protein sequence Red =Cloning site Green =Tags(s)
	<p>MAPWGKRLAGVRGVLLDISGVLYDSGAGGGTAIAGSVEAVARLKRSRLKVRFCTNESQKSRAELVGQLQR LGFDISEQEVTAPAPAACQILKERGLRPYLLIHDGVRSEFDQIDTSNPNCVVIADAGESFSYQNMNNAFQ VLMELEKPVLLISLGKGRYYKETSGLMLDVGPYMKALEYACGIKAEVVGKPSPEFFKSALQAIGVEAHQAV MIGDDIVGDVGGARCGMRALQVRTGKFRPSDEHHPEVKADGYVDNLAEAVDLLLQHADK</p> <p>TRTRPLEQKLISEEDLAANDILDYKDDDDKV</p>
Tag:	C-Myc/DDK
Predicted MW:	29 kDa
Concentration:	>0.05 µg/µL as determined by microplate BCA method
Purity:	> 80% as determined by SDS-PAGE and Coomassie blue staining
Buffer:	25 mM Tris-HCl, 100 mM glycine, pH 7.3, 10% glycerol
Preparation:	Recombinant protein was captured through anti-DDK affinity column followed by conventional chromatography steps.
Note:	For testing in cell culture applications, please filter before use. Note that you may experience some loss of protein during the filtration process.
Storage:	Store at -80°C.
Stability:	Stable for 12 months from the date of receipt of the product under proper storage and handling conditions. Avoid repeated freeze-thaw cycles.
RefSeq:	<u>NP_071409</u>
Locus ID:	64077



[View online »](#)

UniProt ID: [Q9H008](#)

RefSeq Size: 1703

Cytogenetics: 10q26.13

RefSeq ORF: 810

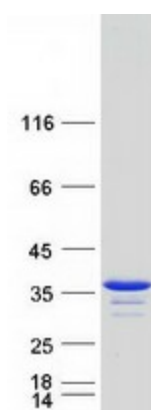
Synonyms: HDHD2B

Summary: Phosphatase that hydrolyzes imidodiphosphate, 3-phosphohistidine and 6-phospholysine. Has broad substrate specificity and can also hydrolyze inorganic diphosphate, but with lower efficiency (By similarity).[UniProtKB/Swiss-Prot Function]

Protein Families: Druggable Genome

Protein Pathways: Oxidative phosphorylation

Product images:



Coomassie blue staining of purified LHPP protein (Cat# TP313279). The protein was produced from HEK293T cells transfected with LHPP cDNA clone (Cat# [RC213279]) using MegaTran 2.0 (Cat# [TT210002]).