

Product datasheet for **TP313260M**

CLCC1 (NM_001048210) Human Recombinant Protein

Product data:

Product Type:	Recombinant Proteins
Description:	Purified recombinant protein of Homo sapiens chloride channel CLIC-like 1 (CLCC1), transcript variant 1, 100 µg
Species:	Human
Expression Host:	HEK293T
Expression cDNA Clone or AA Sequence:	>RC213260 representing NM_001048210 Red =Cloning site Green =Tags(s)

MLCSLLLCCELLLAVAGYAHDDDWDPTDMLNYDAASGTMRSQAKYGISGEKDVSPDLSCADEISECYHK
LDSLTYKIDECEKKKREDYESQSNPVFRRYLNKILIEAGKGLPDENKGMHYDAEIIKRETLLEIQKF
LNGEDWKP GALDDALSDILINFKFHDFETWKWRFEDSFGVDPYNVLMVLLCLLCIVLVATELWTVRWWY
TQLRRVLIISFLFSLGWNWMYLYKLAFQAQHQAEVAKMEPLNNVCAKKMDWTGSIWEWFRSSWTKDDPCQ
KYYELLLVNIWLVPPPTKALAVTFTTFVTEPLKHIGKGTGEFIKALMKEIPALLHLPVLIIMAILSFC
YGAGKSVHVL RHIGGPEREPPQALRPDRRRQEEIDYRPDGGAGDADFHYRGQMGPTEQGPYAKTYEGRR
EILRERDVLRFQTGNKSPEVLRADFVDAEAREHPTVPSHKSPVLDTKPKETGGILGEGTPKESSTES
SQSAKPVSGQDTSNGTEGSPA AEKAQLKSEAAGSPDQGSTYSPARGVAGPRGQDPVSSPCG

TRTRPLEQKLISEEDLAANDILDYKDDDDKV

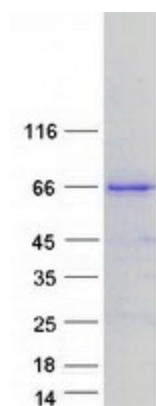
Tag:	C-Myc/DDK
Predicted MW:	61.8 kDa
Concentration:	>0.05 µg/µL as determined by microplate BCA method
Purity:	> 80% as determined by SDS-PAGE and Coomassie blue staining
Buffer:	25 mM Tris-HCl, 100 mM glycine, pH 7.3, 10% glycerol
Preparation:	Recombinant protein was captured through anti-DDK affinity column followed by conventional chromatography steps.
Note:	For testing in cell culture applications, please filter before use. Note that you may experience some loss of protein during the filtration process.
Storage:	Store at -80°C.



[View online »](#)

Stability:	Stable for 12 months from the date of receipt of the product under proper storage and handling conditions. Avoid repeated freeze-thaw cycles.
RefSeq:	NP_001041675
Locus ID:	23155
UniProt ID:	Q96S66 , A0A024R0G0
RefSeq Size:	4825
Cytogenetics:	1p13.3
RefSeq ORF:	1653
Synonyms:	MCLC; RP32
Summary:	Seems to act as a chloride ion channel.[UniProtKB/Swiss-Prot Function]
Protein Families:	Ion Channels: Other, Transmembrane

Product images:



Coomassie blue staining of purified CLCC1 protein (Cat# [TP313260]). The protein was produced from HEK293T cells transfected with CLCC1 cDNA clone (Cat# [RC213260]) using MegaTran 2.0 (Cat# [TT210002]).