

## Product datasheet for **TP313256M**

### LD78 beta (CCL3L1) (NM\_021006) Human Recombinant Protein

#### Product data:

Product Type:	Recombinant Proteins
Description:	Recombinant protein of human chemokine (C-C motif) ligand 3-like 1 (CCL3L1), 100 µg
Species:	Human
Expression Host:	HEK293T
Expression cDNA Clone or AA Sequence:	>RC213256 protein sequence <b>Red</b> =Cloning site <b>Green</b> =Tags(s)
	MQVSTAALAVLLCTMALCNQVLSAPLAADTPTACCFSYTSRQIPQNFADYFETSSQCSKPSVIFLTKRG RQVCADPSEEWVQKYVSDLELSA
	<b>TR</b> TRPLEQKLISEEDLAANDILDYKDDDDKV
Tag:	C-Myc/DDK
Predicted MW:	7.7 kDa
Concentration:	>0.05 µg/µL as determined by microplate BCA method
Purity:	> 80% as determined by SDS-PAGE and Coomassie blue staining
Buffer:	25 mM Tris-HCl, 100 mM glycine, pH 7.3, 10% glycerol
Preparation:	Recombinant protein was captured through anti-DDK affinity column followed by conventional chromatography steps.
Note:	For testing in cell culture applications, please filter before use. Note that you may experience some loss of protein during the filtration process.
Storage:	Store at -80°C.
Stability:	Stable for 12 months from the date of receipt of the product under proper storage and handling conditions. Avoid repeated freeze-thaw cycles.
RefSeq:	<a href="#">NP_066286</a>
Locus ID:	6349
UniProt ID:	<a href="#">P16619</a>
RefSeq Size:	805
Cytogenetics:	17q21.1



[View online »](#)

RefSeq ORF: 279

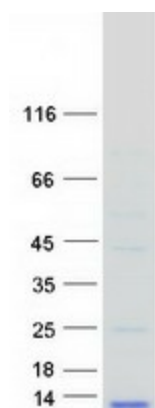
Synonyms: 464.2; D17S1718; G0S19-2; LD78; LD78-beta(1-70); LD78BETA; MIP1AP; SCYA3L; SCYA3L1

**Summary:** This gene is one of several cytokine genes that are clustered on the q-arm of chromosome 17. Cytokines are a family of secreted proteins that function in inflammatory and immunoregulatory processes. The protein encoded by this gene binds to several chemokine receptors, including chemokine binding protein 2 and chemokine (C-C motif) receptor 5 (CCR5). CCR5 is a co-receptor for HIV, and binding of this protein to CCR5 inhibits HIV entry. The copy number of this gene varies among individuals, where most individuals have one to six copies, and a minority of individuals have zero or more than six copies. There are conflicting reports about copy number variation of this gene and its correlation to disease susceptibility. This record represents one of two copies that are present on the ALT\_REF\_LOCI\_2 alternate haplotype of the GRCh38 human reference genome assembly. Alternative splicing of this gene results in multiple transcript variants. [provided by RefSeq, Apr 2014]

**Protein Families:** Druggable Genome, Secreted Protein

**Protein Pathways:** Chemokine signaling pathway, Cytokine-cytokine receptor interaction

### Product images:



Coomassie blue staining of purified CCL3L1 protein (Cat# [TP313256]). The protein was produced from HEK293T cells transfected with CCL3L1 cDNA clone (Cat# [RC213256]) using MegaTran 2.0 (Cat# [TT210002]).