

## Product datasheet for **TP313224L**

### **SPIN2B (NM\_001006683) Human Recombinant Protein**

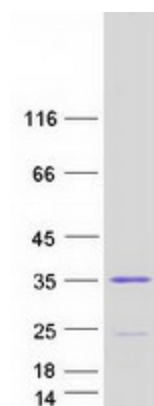
#### Product data:

Product Type:	Recombinant Proteins
Description:	Recombinant protein of human spindlin family, member 2B (SPIN2B), transcript variant 3, 1 mg
Species:	Human
Expression Host:	HEK293T
Expression cDNA Clone or AA Sequence:	>RC213224 protein sequence <b>Red</b> =Cloning site <b>Green</b> =Tags(s)  MKTPNAQEAEGQQTRAAAGRATGSANMTKKKVSQKKQRGRPSSQPRRNIVGCRISHGWKEGDEPITQW KG TVLDQVPINPSLYLVKYDGDICVYGLELHRDERVLSLKILSDRVASSHISDANLANTIIGKAVEHMFEGE HGSKDEWRGMVLAQAPIMKAWFYITYEKDPVLYMYQLDDYKEGDLRIMPESSESPPTEREPGGVVDGLI GKHVEYTKEDGSKRIGMVIHQVEAKPSVYFIKFDDDFHIYVYDLVKKS  <b>TRTRPLEQKLISEEDLAANDILDYKDDDDKV</b>
Tag:	C-Myc/DDK
Predicted MW:	29 kDa
Concentration:	>0.05 µg/µL as determined by microplate BCA method
Purity:	> 80% as determined by SDS-PAGE and Coomassie blue staining
Buffer:	25 mM Tris-HCl, 100 mM glycine, pH 7.3, 10% glycerol
Preparation:	Recombinant protein was captured through anti-DDK affinity column followed by conventional chromatography steps.
Note:	For testing in cell culture applications, please filter before use. Note that you may experience some loss of protein during the filtration process.
Storage:	Store at -80°C.
Stability:	Stable for 12 months from the date of receipt of the product under proper storage and handling conditions. Avoid repeated freeze-thaw cycles.
RefSeq:	<a href="#">NP_001006684</a>
Locus ID:	474343


[View online »](#)

UniProt ID:	<u>Q9BPZ2</u>
RefSeq Size:	1216
Cytogenetics:	Xp11.21
RefSeq ORF:	774
Synonyms:	dJ323P24.2; SPIN-2; SPIN-2B; SPIN2_duplicate; TDRD26
Summary:	Involved in the regulation of cell cycle progression, this activity is related to the inhibition of apoptosis following the removal of essential growth factors (PubMed:12145692). Exhibits H3K4me3-binding activity (PubMed:29061846).[UniProtKB/Swiss-Prot Function]

## Product images:



Coomassie blue staining of purified SPIN2B protein (Cat# [TP313224]). The protein was produced from HEK293T cells transfected with SPIN2B cDNA clone (Cat# [RC213224]) using MegaTran 2.0 (Cat# [TT210002]).