

## Product datasheet for **TP313170L**

### Myosin (MYL4) (NM\_002476) Human Recombinant Protein

#### Product data:

Product Type:	Recombinant Proteins
Description:	Recombinant protein of human myosin, light chain 4, alkali; atrial, embryonic (MYL4), transcript variant 2, 1 mg
Species:	Human
Expression Host:	HEK293T
Expression cDNA Clone or AA Sequence:	>RC213170 protein sequence <b>Red</b> =Cloning site <b>Green</b> =Tags(s)
	MAPKKPEPKKEAAKPAPAPAPAPAPAPAPEAPKEPAFDPKSVKIDFTADQIEEFKEAFSLDRTPTGEMKITYGQCGDVLRLALGQNPTNAEVLRLVLGKPKPEEMNVKMLDFETFLPILQHISRNKEQGTIEDFVEGLRVFDKESNGTVMGAELRHVLATLGEKMTEAEVEQLLAGQEDANGCINYEAFVKHIMSG
	<b>TRTRPLEQKLISEEDLAANDILDYKDDDDKV</b>
Tag:	C-Myc/DDK
Predicted MW:	21.4 kDa
Concentration:	>0.05 µg/µL as determined by microplate BCA method
Purity:	> 80% as determined by SDS-PAGE and Coomassie blue staining
Buffer:	25 mM Tris-HCl, 100 mM glycine, pH 7.3, 10% glycerol
Preparation:	Recombinant protein was captured through anti-DDK affinity column followed by conventional chromatography steps.
Note:	For testing in cell culture applications, please filter before use. Note that you may experience some loss of protein during the filtration process.
Storage:	Store at -80°C.
Stability:	Stable for 12 months from the date of receipt of the product under proper storage and handling conditions. Avoid repeated freeze-thaw cycles.
RefSeq:	<a href="#">NP_002467</a>
Locus ID:	4635
UniProt ID:	<a href="#">P12829</a>



[View online »](#)

RefSeq Size: 855

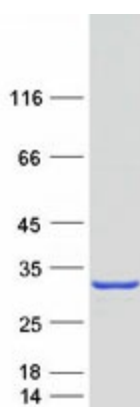
Cytogenetics: 17q21.32

RefSeq ORF: 591

Synonyms: ALC1; AMLC; GT1; PRO1957

**Summary:** Myosin is a hexameric ATPase cellular motor protein. It is composed of two myosin heavy chains, two nonphosphorylatable myosin alkali light chains, and two phosphorylatable myosin regulatory light chains. This gene encodes a myosin alkali light chain that is found in embryonic muscle and adult atria. Two alternatively spliced transcript variants encoding the same protein have been found for this gene. [provided by RefSeq, Jul 2008]

### Product images:



Coomassie blue staining of purified MYL4 protein (Cat# [TP313170]). The protein was produced from HEK293T cells transfected with MYL4 cDNA clone (Cat# [RC213170]) using MegaTran 2.0 (Cat# [TT210002]).