

Product datasheet for **TP313161M**

ARSA (NM_001085427) Human Recombinant Protein

Product data:

Product Type:	Recombinant Proteins
Description:	Purified recombinant protein of Homo sapiens arylsulfatase A (ARSA), transcript variant 4, 100 µg
Species:	Human
Expression Host:	HEK293T
Expression cDNA Clone or AA Sequence:	>RC213161 protein sequence Red =Cloning site Green =Tags(s)

MGAPRLLLLALAAGLAVARPPNIVLIFADDLGYGDLGCYGHPSSTTPNLDQLAAGGLRFTDFYVPVSLCT
PSRAALLTGRLPVRMGMYPGVLPSSRGGPLLEEVTVAEVLAAARGYLTMAGKWHLGVGPEGAFPPHQG
FHRFLGIPYSHDQGPCQNLTCFPATPCDGGCDQGLVPIPLLANSVEAQPPWLPGLEARYMAFAHDLMA
DAQRQDRPFLLYASHHHTYPQFSGQSFAERSGRGPFGDSLMELDAAVGTLMTAIGDLGLLEETLVIFTA
DNGPETMRMSRGGCSGLLRGKGTTYEGGVREPALAFWPGHIAPGVTHELASSDLLPTLAALAGAPLPN
VTLDGFDLSPLLGTGKSPRQSLFFYPSYPDEVRGVFAVRSGKYKAHFFTQGSAHSDTTADPACHASSSL
TAHEPPLLYDLKDPGENYNLLGGVAGATPEVLQALKQLLLKAQLDAAVTFGPSQVARGEDPALQICCH
PGCTPRPACCHCPDPHA

TRTRPLEQKLISEEDLAANDILDYKDDDDKV

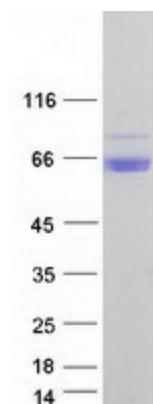
Tag:	C-Myc/DDK
Predicted MW:	51.9 kDa
Concentration:	>0.05 µg/µL as determined by microplate BCA method
Purity:	> 80% as determined by SDS-PAGE and Coomassie blue staining
Buffer:	25 mM Tris-HCl, 100 mM glycine, pH 7.3, 10% glycerol
Preparation:	Recombinant protein was captured through anti-DDK affinity column followed by conventional chromatography steps.
Note:	For testing in cell culture applications, please filter before use. Note that you may experience some loss of protein during the filtration process.
Storage:	Store at -80°C.



[View online »](#)

Stability:	Stable for 12 months from the date of receipt of the product under proper storage and handling conditions. Avoid repeated freeze-thaw cycles.
RefSeq:	NP_001078896
Locus ID:	410
UniProt ID:	P15289 , A0A0C4DFZ2
RefSeq Size:	4127
Cytogenetics:	22q13.33
RefSeq ORF:	1521
Synonyms:	ASA; MLD
Summary:	The protein encoded by this gene hydrolyzes cerebroside sulfate to cerebroside and sulfate. Defects in this gene lead to metachromatic leucodystrophy (MLD), a progressive demyelination disease which results in a variety of neurological symptoms and ultimately death. Alternatively spliced transcript variants have been described for this gene. [provided by RefSeq, Dec 2010]
Protein Families:	Druggable Genome
Protein Pathways:	Lysosome, Sphingolipid metabolism

Product images:



Coomassie blue staining of purified ARSA protein (Cat# [TP313161]). The protein was produced from HEK293T cells transfected with ARSA cDNA clone (Cat# [RC213161]) using MegaTran 2.0 (Cat# [TT210002]).