

## Product datasheet for TP313137M

### SUMF2 (NM\_015411) Human Recombinant Protein

#### Product data:

Product Type:	Recombinant Proteins
Description:	Recombinant protein of human sulfatase modifying factor 2 (SUMF2), transcript variant 2, 100 µg
Species:	Human
Expression Host:	HEK293T
Expression cDNA Clone or AA Sequence:	>RC213137 representing NM_015411 <b>Red</b> =Cloning site <b>Green</b> =Tags(s)  MARHGLPLLPLLSLLVGAWLKLGNQATSMVQLQGGRFLMGTNSPDSRDGEGPVREATVKPFAIDIFPVT NKDFRDFVREKKYRTEAEMFGWSFVFEDFVSDLRNKATQPMKSVLWWLPVEKAFWRQPAGPGSGIRERL EHPVLHVSWNDARAYCAWRGKRLPTEEEWEFAARGGLKGQVYPWGNWFQPNRTNLWQGFKPKGDKAEDGF HGVSPVNAFPAQNNYGLYDLLGNVWEWTASPYQAAEQDMRVLRGASWIDTADGSANHRARVTRMGNTPD SASDNLGFRCAADAGRPPGEL  <b>TRTRPLEQKLISEEDLAANDILDYKDDDDKV</b>
Tag:	C-Myc/DDK
Predicted MW:	31.2 kDa
Concentration:	>0.05 µg/µL as determined by microplate BCA method
Purity:	> 80% as determined by SDS-PAGE and Coomassie blue staining
Buffer:	25 mM Tris-HCl, 100 mM glycine, pH 7.3, 10% glycerol
Preparation:	Recombinant protein was captured through anti-DDK affinity column followed by conventional chromatography steps.
Note:	For testing in cell culture applications, please filter before use. Note that you may experience some loss of protein during the filtration process.
Storage:	Store at -80°C.
Stability:	Stable for 12 months from the date of receipt of the product under proper storage and handling conditions. Avoid repeated freeze-thaw cycles.
RefSeq:	<a href="#">NP_056226</a>
Locus ID:	25870



[View online »](#)

UniProt ID: [Q8NBJ7](#)

RefSeq Size: 2005

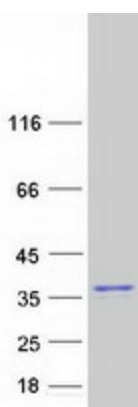
Cytogenetics: 7p11.2

RefSeq ORF: 903

Synonyms: pFGE

**Summary:** The catalytic sites of sulfatases are only active if they contain a unique amino acid, C-alpha-formylglycine (FGly). The FGly residue is posttranslationally generated from a cysteine by enzymes with FGly-generating activity. The gene described in this record is a member of the sulfatase-modifying factor family and encodes a protein with a DUF323 domain that localizes to the lumen of the endoplasmic reticulum. This protein has low levels of FGly-generating activity but can heterodimerize with another family member - a protein with high levels of FGly-generating activity. Alternate transcriptional splice variants, encoding different isoforms, have been characterized. [provided by RefSeq, Jul 2008]

### Product images:



Coomassie blue staining of purified SUMF2 protein (Cat# [TP313137]). The protein was produced from HEK293T cells transfected with SUMF2 cDNA clone (Cat# [RC213137]) using MegaTran 2.0 (Cat# [TT210002]).